



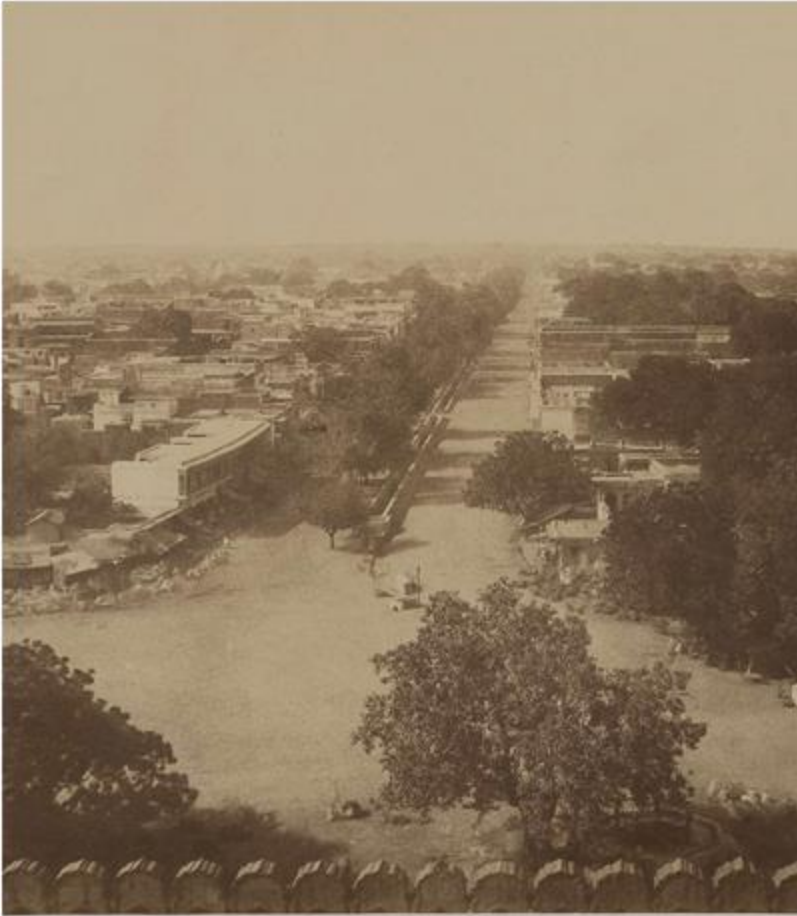
# CHANDNI CHOWK

REDEVELOPING URBAN SPACES - A NEW PARADIGM FOR INDIA





# CONTEXT



## Historical evolution

The street transformed and survived over multiple eras.



## Multimodal

Different kinds of vehicles access it. Two railway stations, four metro stations surround it.



## National scale commercial center

The area is a one-stop shopping experience and is a wholesale market with national scale footfall.



# NEED FOR TRANSFORMATION \_ ISSUES



Ever increasing congestion



Fire Accidents



Crime and Safety Concerns



No equity distribution of the space



Pollution



# NEED FOR TRANSFORMATION \_ ISSUES



Chaotic image of the Market



Scattered and tangled Utilities



Not User friendly



No last mile for public transport solutions

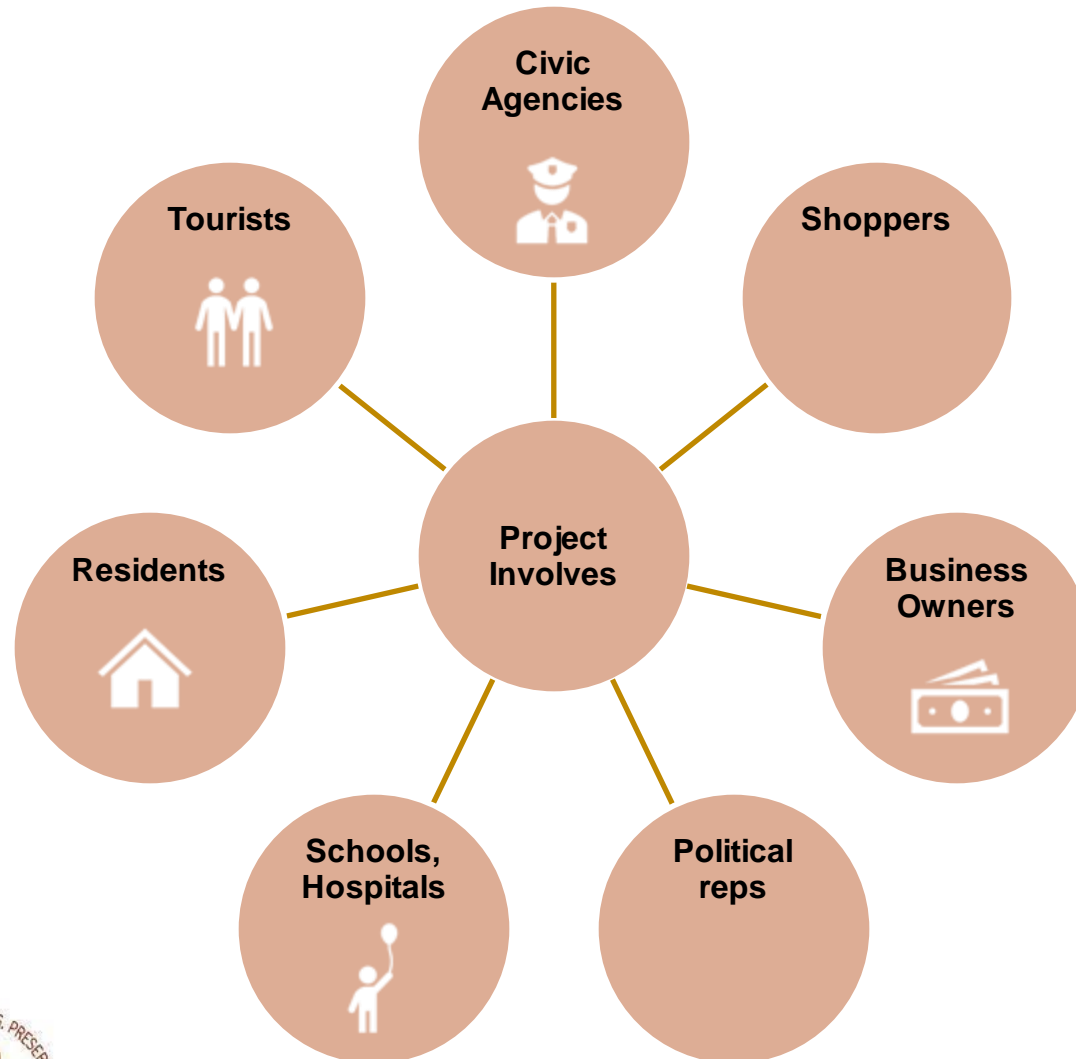


Limited economic potential





# MULTIPLE STAKEHOLDERS



The project involves and impacts directly or indirectly multiple stakeholders. Apart from that, the **complete city and country** becomes a stakeholder with the aim of:-

- Reducing congestion
  - Reducing pollution
  - Efficient and sustainable travel solutions
- Reclaiming large scale public space.
- A trigger to economic development
- An iconic inspirational project for multiple other cities.

Because so many stakeholders are involved, the complexities and dynamics become the most critical aspect of the project to be considered to make it successful.



# DESIGN IMPLEMENTED \_ FIVE KEY STRATEGIES



## Hybrid Pedestrianization

- Pedestrians and NMT only – 9am to 9pm
- Loading and Unloading - 9pm to 9am
- Exemptions – Ambulance, fire trucks and Bank vans



## Integrated Utilities

- Drainage, water pipeline and sewerage
- Electrical
- Solid waste
- Fire
- CCTV
- Cables



## Provided public amenities

- Toilets
- Police post
- Booths
- Street furniture
- Multilingual Signages
- Dustbins



## Inclusive Design Approach

- Streets as public space
- Prioritizing Active mobility
- Accessible for all
- Contextual elements



## Comprehensive Implementation

- Traffic Management Plan
- Designed Intersections in vicinity
- Entry and exit Barricading
- Phase Planning
- Parking Provisions





# DESIGN IMPLEMENTED \_ TESTED SCHEME ON GROUND



Tested colors and type of stones on ground



Tested Street furniture typologies



# INTEGRATED AND UPGRADED UTILITIES

## PLACEMENT OF TRANSFORMERS



Were placed haphazardly in front of Shops  
Obstructed pedestrian movement

BEFORE



Studied underground situation  
After multiple discussions central median decided to be the new location  
Camouflaged transformer colors covered with grill and planters

AFTER



# INTEGRATED AND UPGRADED UTILITIES OVER HEAD HANGING WIRES



Menace of over hanging wires , some too low ,  
Cause multiple incidents of fire,  
Visual congestion on street skyline,  
Ownership ambiguity

**BEFORE**



Established the ownership  
Ensured safely taken off without disturbing market routine, Phase approach,  
BSES coordinated with market closing timings.  
Special budgets given by SRDC to BSES,

**AFTER**



# INTEGRATED AND UPGRADED UTILITIES \_ OTHER UTILITIES

Delhi Jal Board  
Connections

Provision of new  
connections for  
future laid

Sewer restored

Rainwater  
drainage resolved

IGL pipeline  
introduced

MTNL  
underground lines  
realigned

Feeder pillar  
realigned,  
removed from  
walkways

Fire Hydrants  
placed





# TRANSFORMED\_ FROM INTERSECTIONS TO PLAZAS



**BEFORE**



**AFTER**



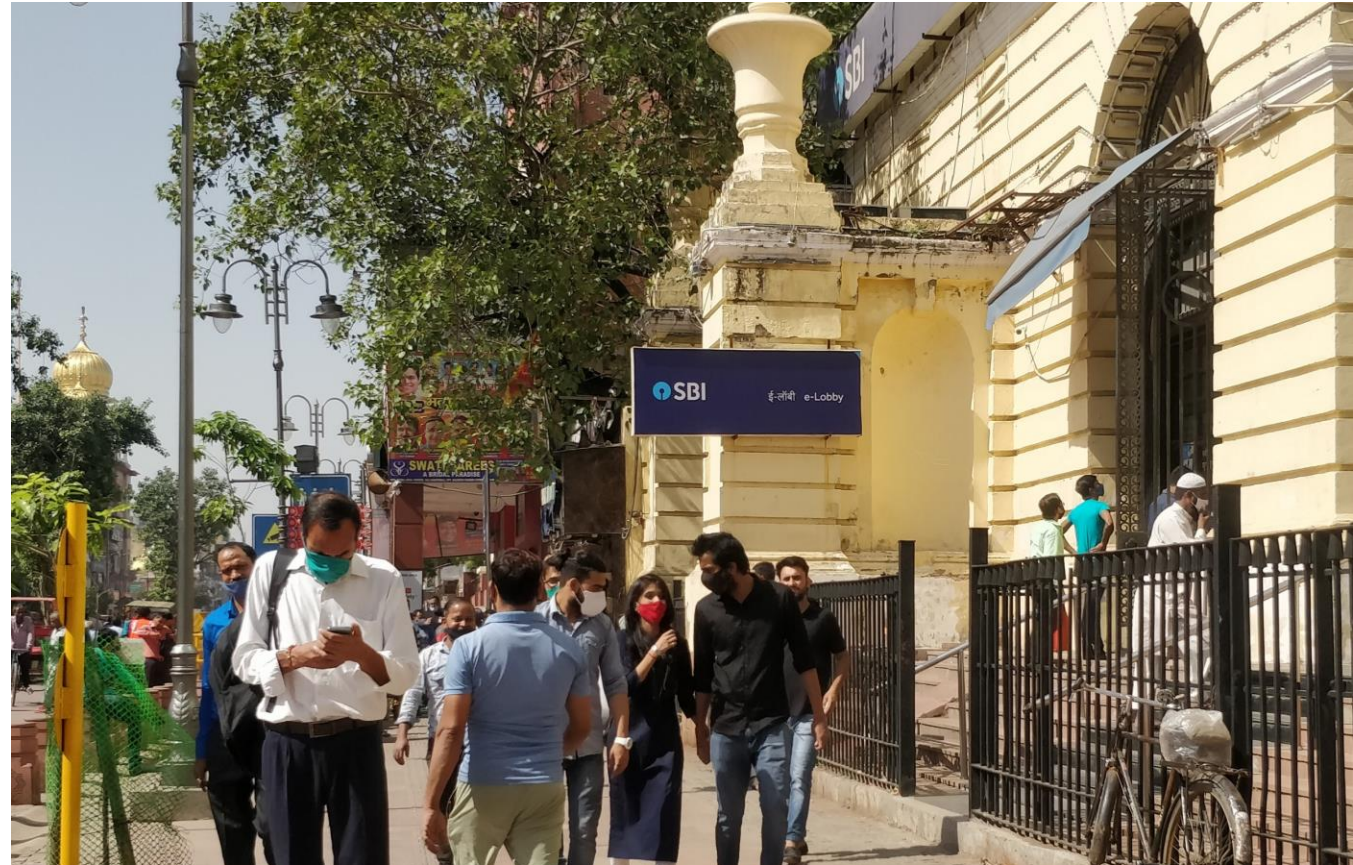
# TRANSFORMED\_ PEDESTRIAN FACILITIES



There was inaccessible space for pedestrians  
Unobstructed footpaths existed  
No pedestrian priority

31/12

BEFORE



Wider walking space created  
Steady floor finishes  
Accessible levels for all users

AFTER



# TRANSFORMED \_ SAFE URBAN ENVIRONMENT FOR ALL





# TRANSFORMED \_ PUBLIC AMENITIES



Dilapidated, dirty and nonfunctional toilets  
Incorrect locations

28/07/2

**BEFORE**



located strategically  
Design for Men, women and PH  
Maintainable model

**AFTER**



# CONSERVED\_ ALL THE TREES WERE PRESERVED



Trees were kept preserved on the central verge and new planters were also installed through out the stretch.

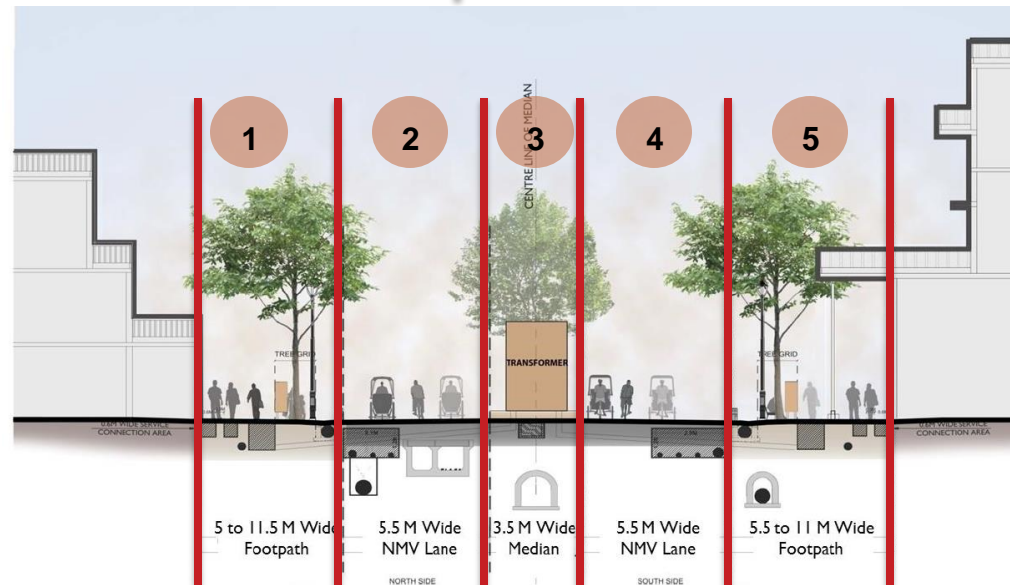


# STEP BY STEP PROCESS \_ IMPLEMENTATION PLAN



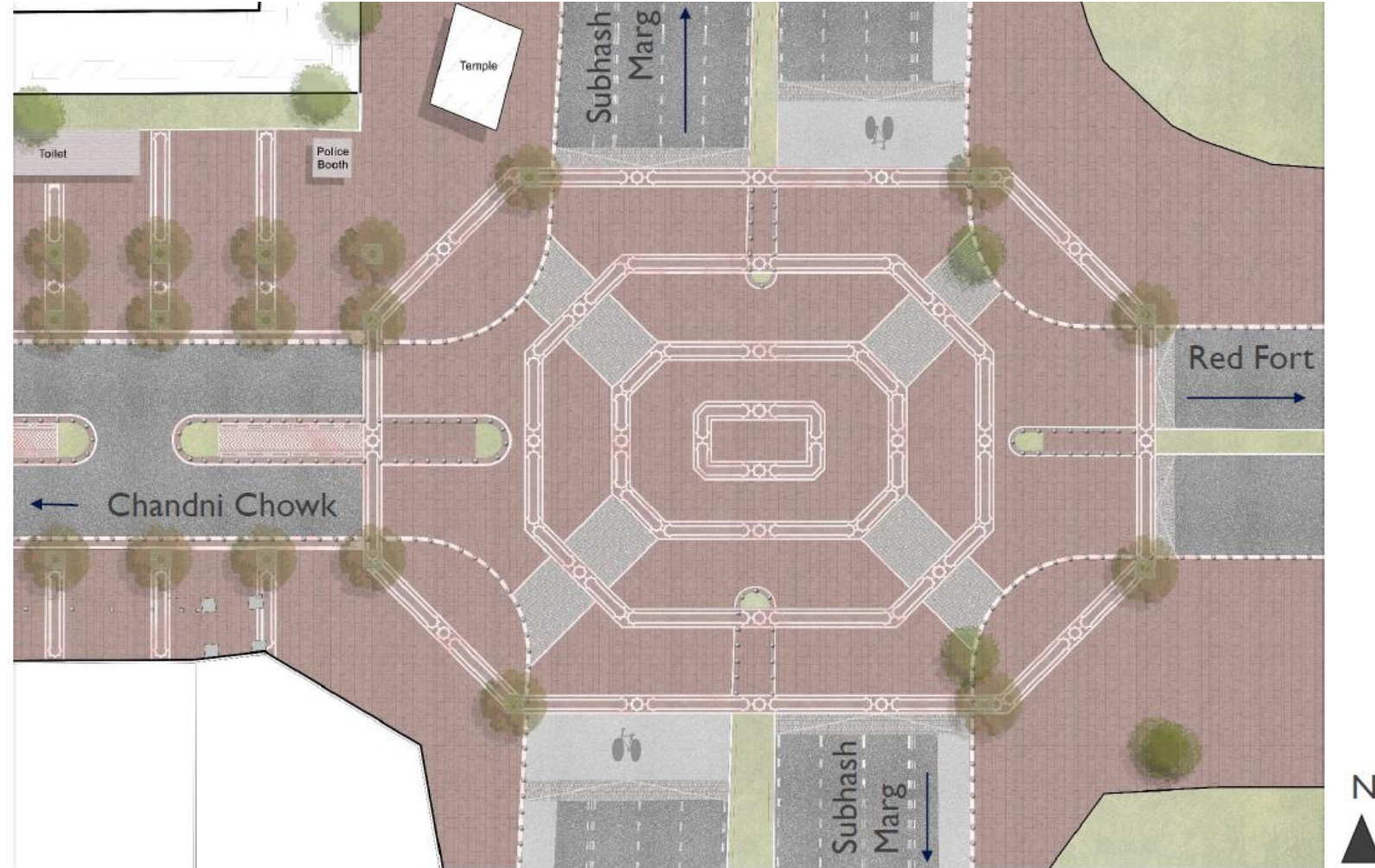
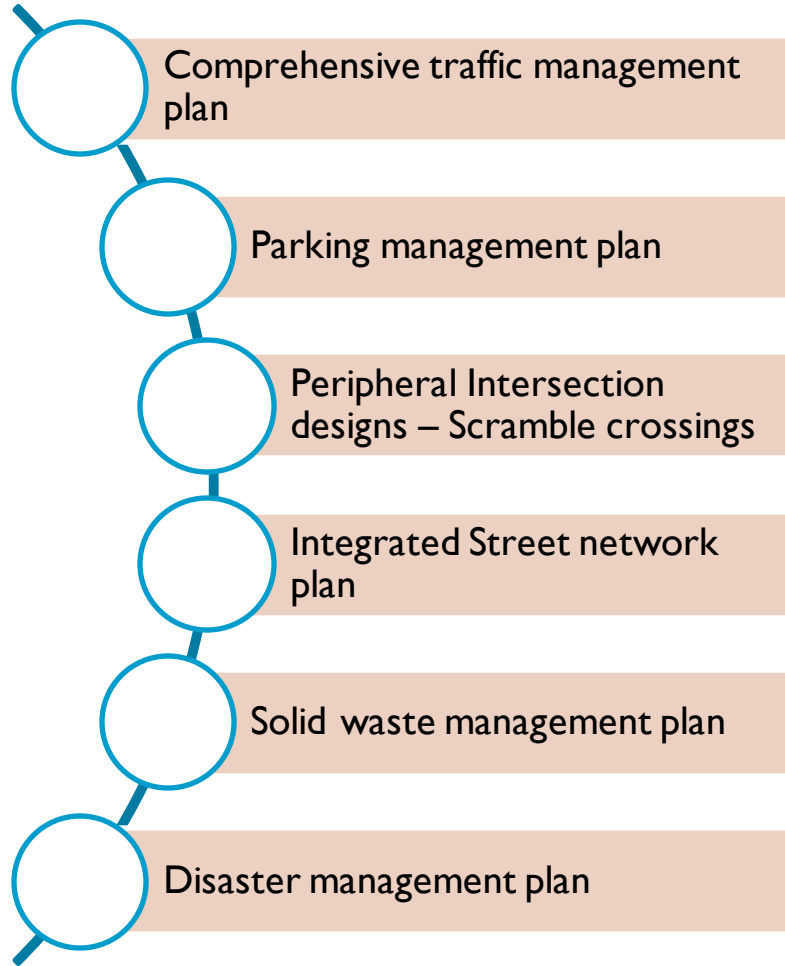
**Market was never closed during implementation.**

- 4 Sections
- 5 Zones





# STEP BY STEP PROCESS \_SUPPORT SYSTEMS





# IMPACT \_ TRAFFIC DECONGESTION OF AREA





# IMPACT \_ VISUAL INTEGRITY \_ CONSERVATION OF HERITAGE



BEFORE



AFTER



# IMPACT \_ LOCAL ECONOMIC DEVELOPMENT



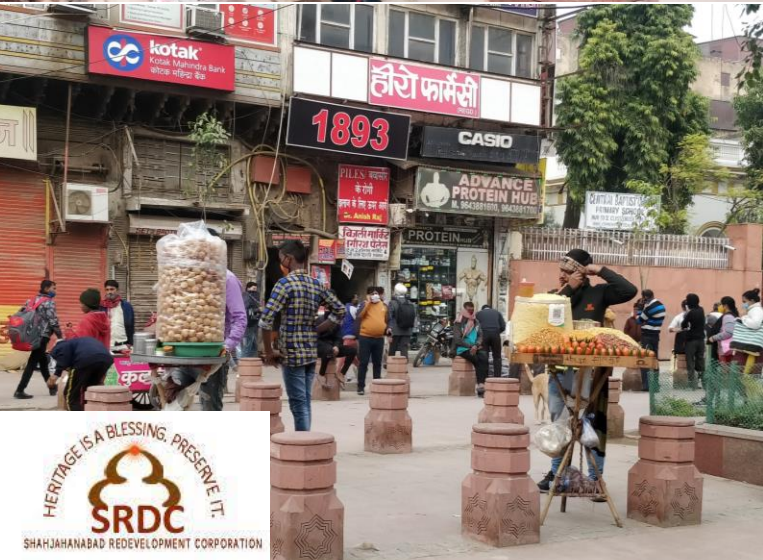
**BEFORE**



**AFTER**



# IMPACT \_ RECLAIMED PUBLIC SPACE





# OUTCOMES



Image Building -  
National Pride



Clean and  
organized



Comfortable and  
Accessible



Sustainable



Safe and secure



Ease of doing  
business



Healthy street



Increased cultural  
activities



Heritage value



**#CHANDNICHOWK**  
**#WALK **A** MILE WITH **A** SMILE**

**THANK YOU**

Ms. Garima Gupta, IAS  
Managing Director, Shahjahanabad Redevelopment Corporation  
[garimaias@gmail.com](mailto:garimaias@gmail.com)  
[Garima Gupta \(@garimag89805994\) / Twitter](#)  
[https://instagram.com/garimagupta\\_ias?utm\\_medium=copy\\_link](https://instagram.com/garimagupta_ias?utm_medium=copy_link)