



DRIVING TOWARDS EQUALITY: UNVEILING THE IMPLICATIONS OF MULTIMODAL INTEGRATION IN BERLIN'S PUBLIC TRANSPORT SYSTEM



Daniel Moser, India Transport Director, GIZ

Public Transport Network in Berlin

1 S-Bahn



2 U-Bahn



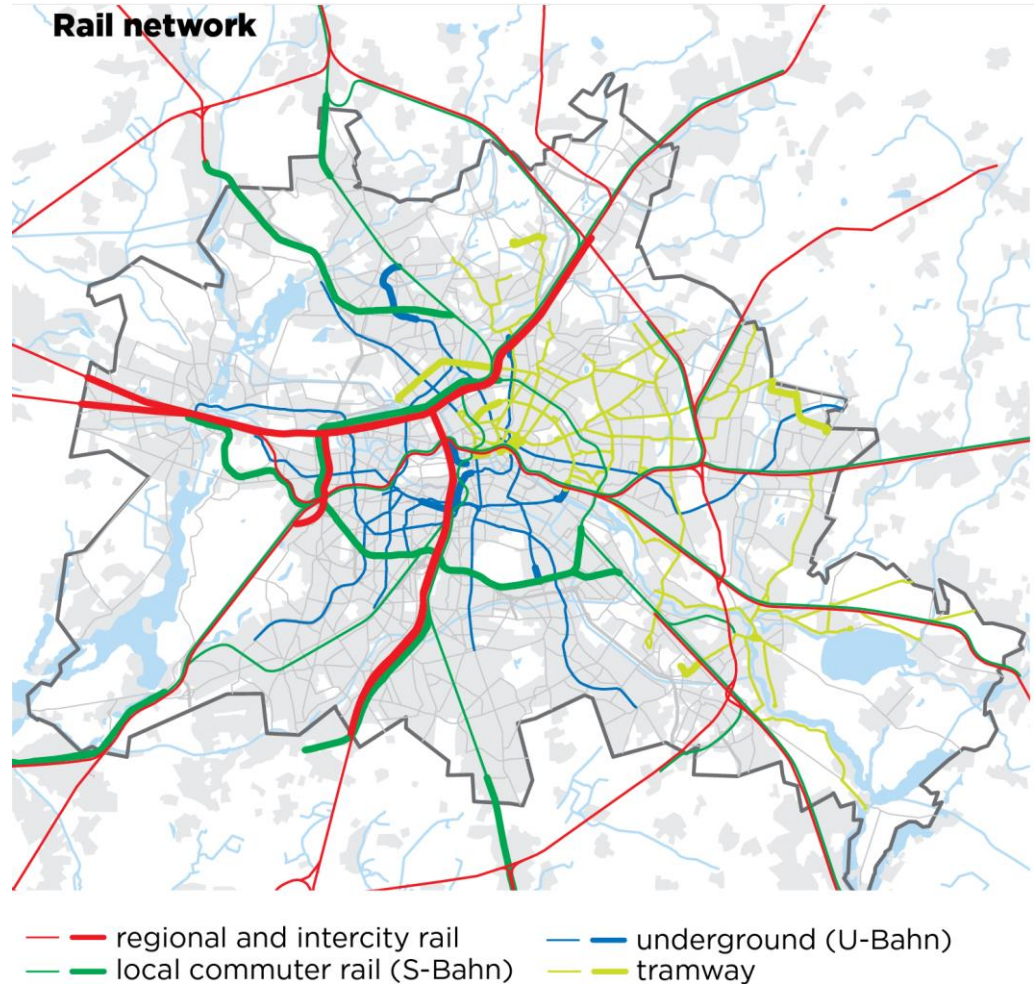
3 Bus



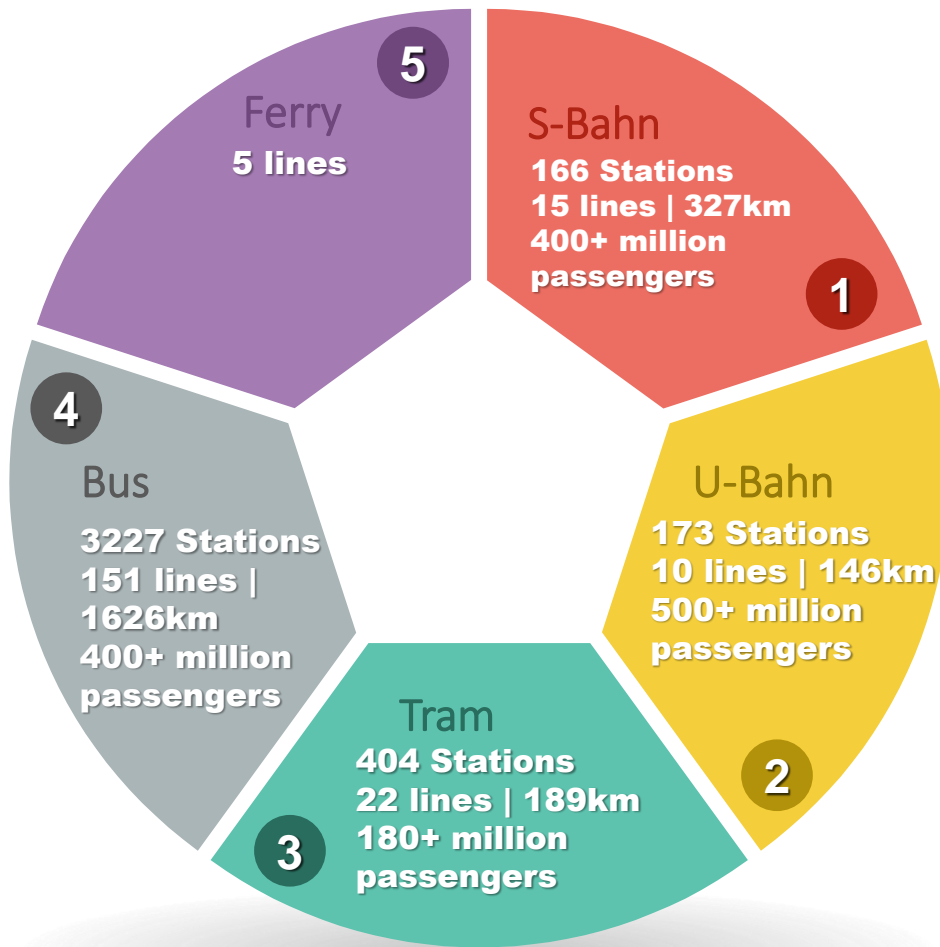
4 Tram



5 Ferry

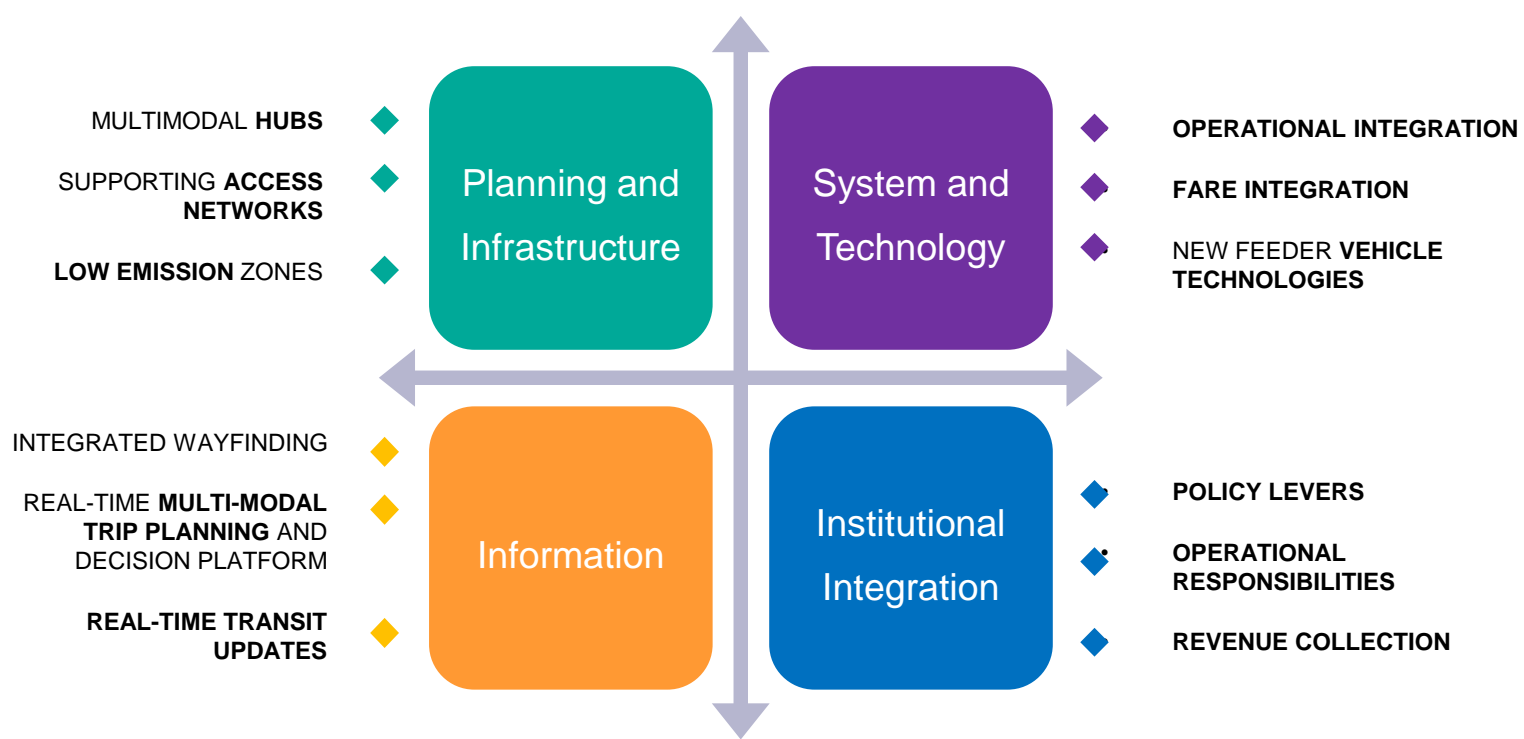


Public Transport Network in Berlin

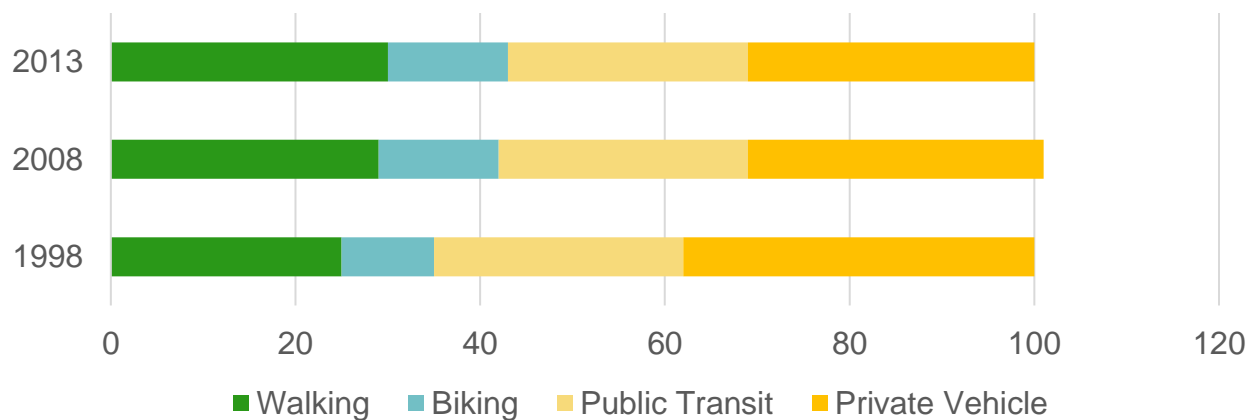


- 1 Mainly overground rapid transit rail system with suburban stops
- 2 Mainly underground rail system / 24h-service on weekends
- 3 Streetcar that operates predominantly in eastern boroughs
- 4 Extensive service with 62 Night Lines
- 5 Operates on a network of waterways within its city boundaries, including the Havel, Spree and Dahme rivers, and many linked lakes and canals

Source: Compiled from various sources.

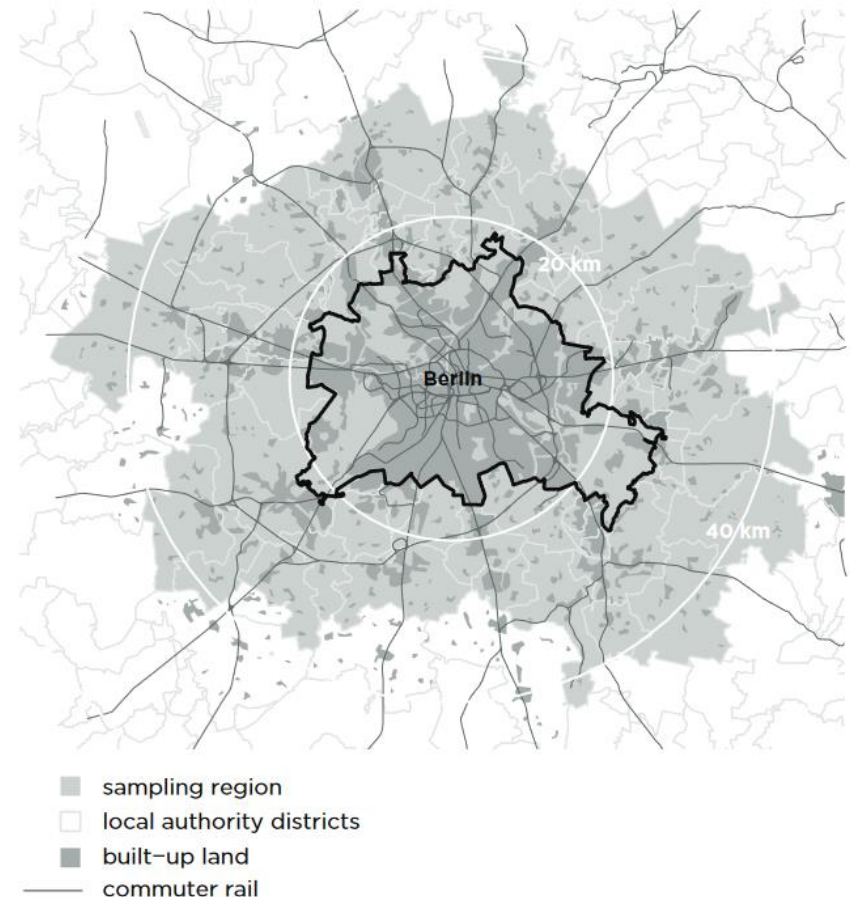
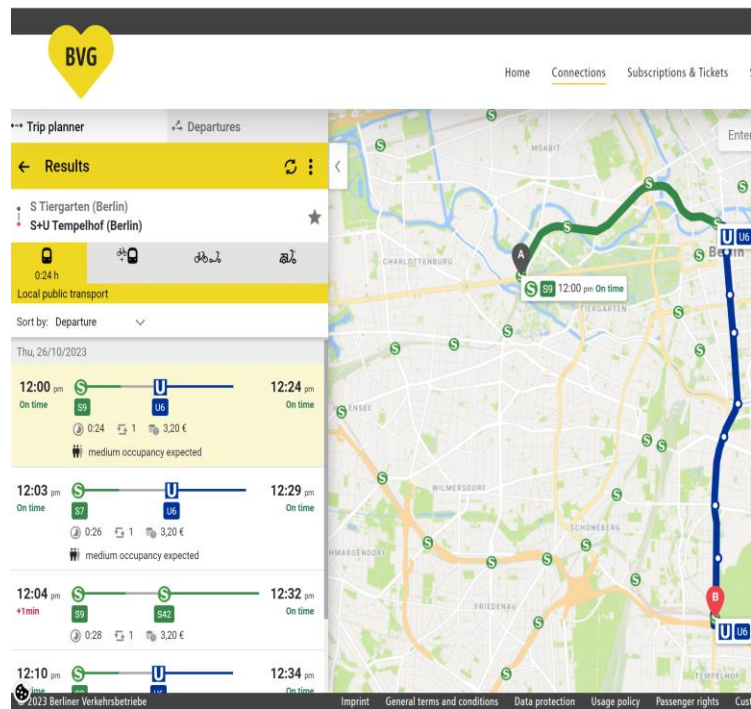


Pillars of Multimodal Integration that have helped Berlin reduce private vehicle mode share



Institutional Integration + Information Integration

- Most of the public transportation modes are administered by the same organization: Berliner Verkehrsbetriebe (BVG), reconstituted as a public body in 1994 and responsible for the U-Bahn, buses, trams and ferries.
- BVG runs an integrated journey planner



Fare and Ticketing Integration

- Common ticketing was launched in 1999. The electronic fahrCard tickets are valid in all public transport: the S- and U-Bahn, buses, trams, and ferries
- The Verkehrsverbund Berlin-Brandenburg (VBB) is a transport association run by public transport providers in the German states of Berlin and Brandenburg.
- Many lines are operated under the VBB fare structure – including regional, and bus, tram, ferry and rail lines.



Physical Integration at the Multimodal Hub - Berlin Hauptbahnhof



Integration of all city and regional modes + retail and office uses

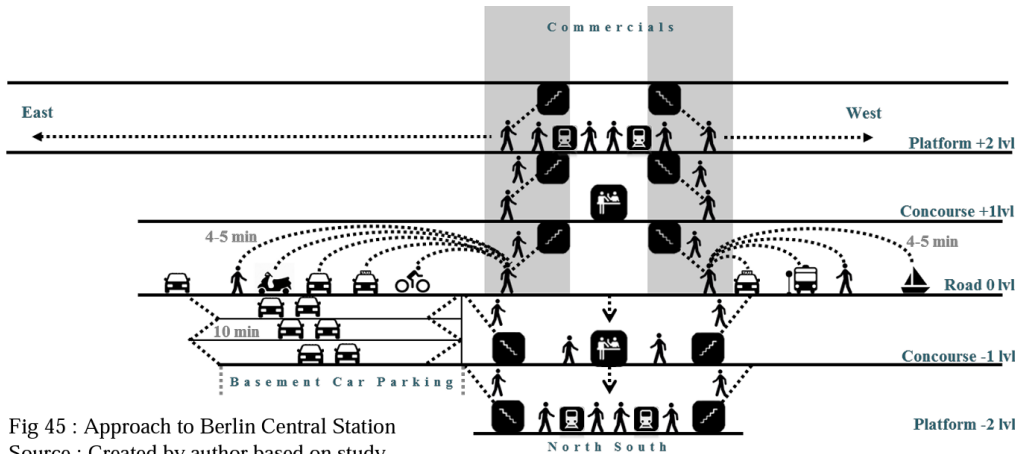
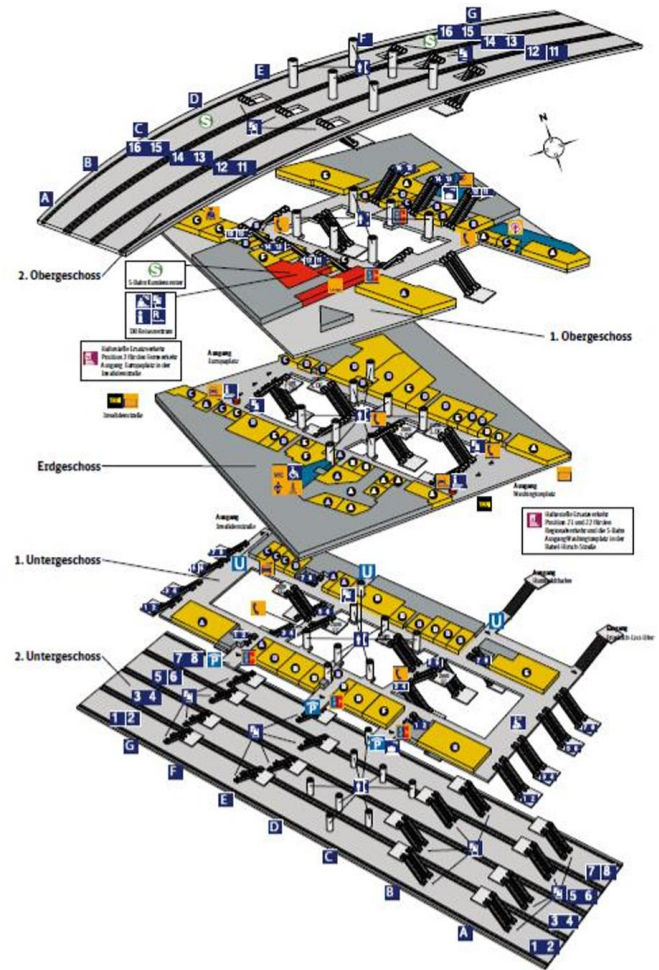


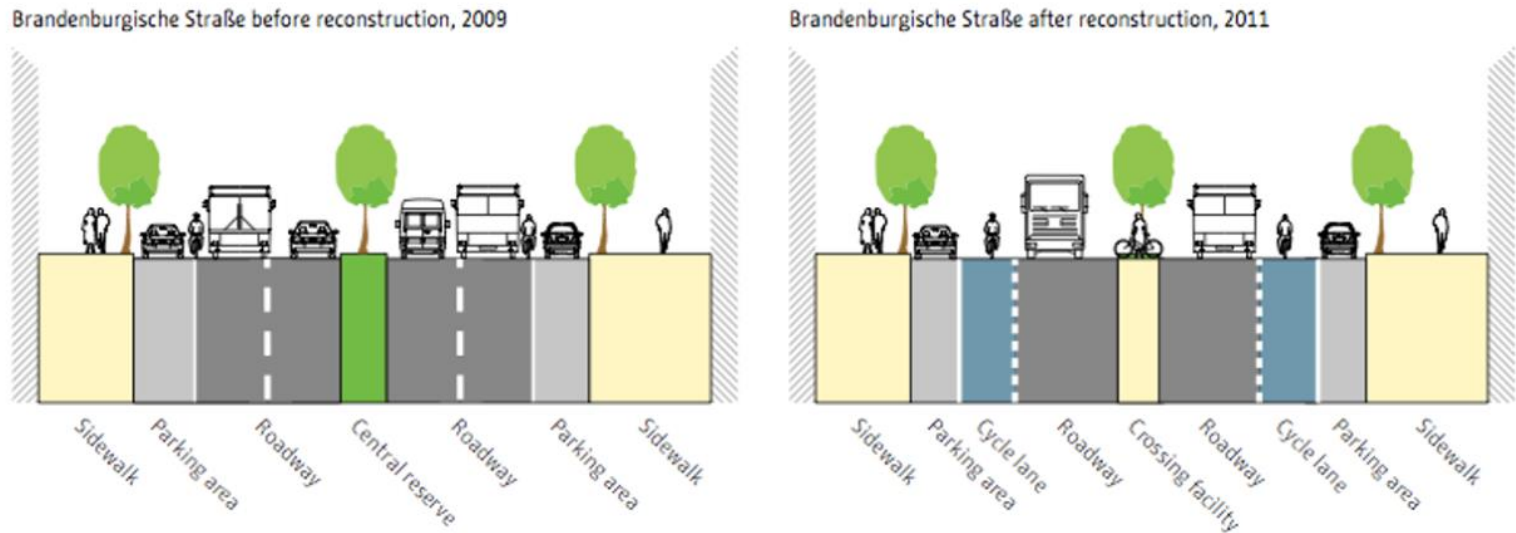
Fig 45 : Approach to Berlin Central Station
Source : Created by author based on study



Mixed Use Development and Retrofit of Streets

- Targeted regional land-use policies that encourage compact, mixed-use development. This makes trips shorter, and promotes walkability.
- Integration of cycle tracks also moves alongside multimodal integration among public transport modes

Figure 1: Design of an “Exemplary Road,” Before and After

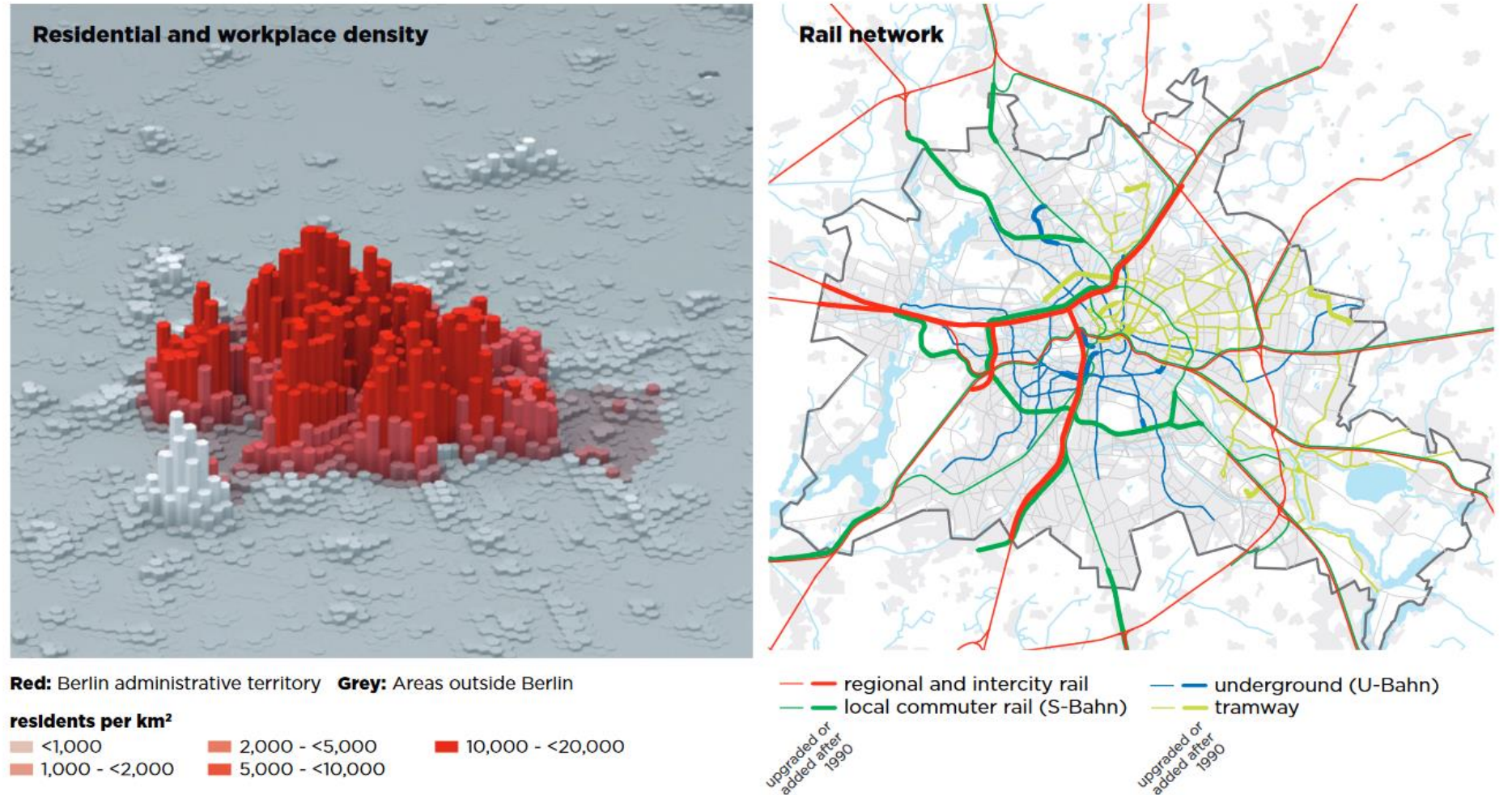


Source: City of Berlin, 2013. *Mobility in the City*.

The Outcome: Accessibility in Berlin

Fig. 3.1. Urban density and recent additions to the rail network in Berlin

Sources: LSE Cities based on LandScan 2010 (left) and Senate Department for Urban Development and the Environment 2013 (right)



Takeaways for Indian cities

User-Centric Approach
Intermodal Connectivity
Comprehensive Planning
Public-Private Partnerships
Active and Sustainable Modes
Affordable and Equitable Fare Structures
Data-Driven Decision-Making
Research and Collaboration
Community Engagement
Continuous Improvement
Inclusive Infrastructure
Political Will