

e-Bus Fleet, Battery & Charging Infra

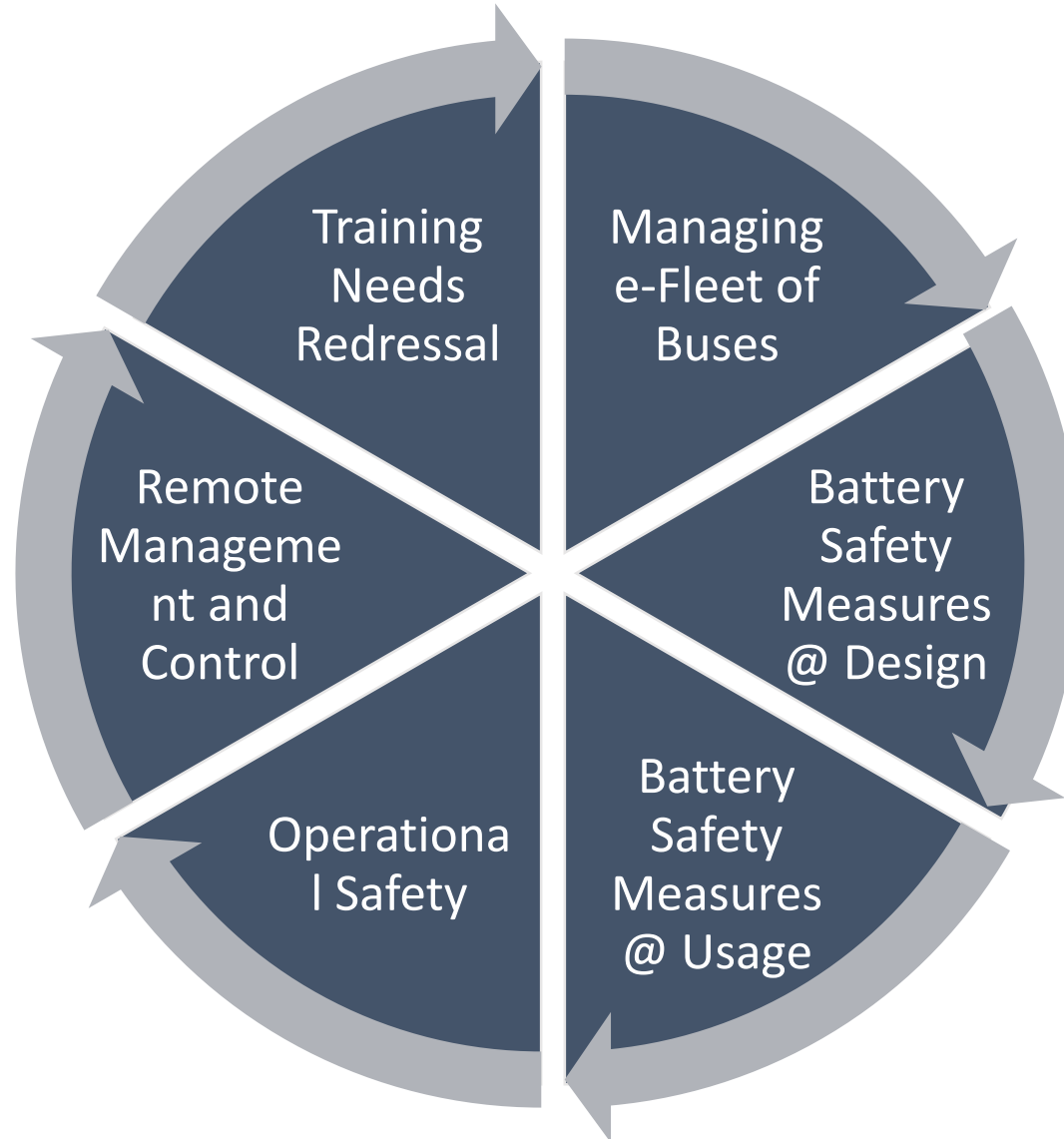


Planning, Management & Optimization

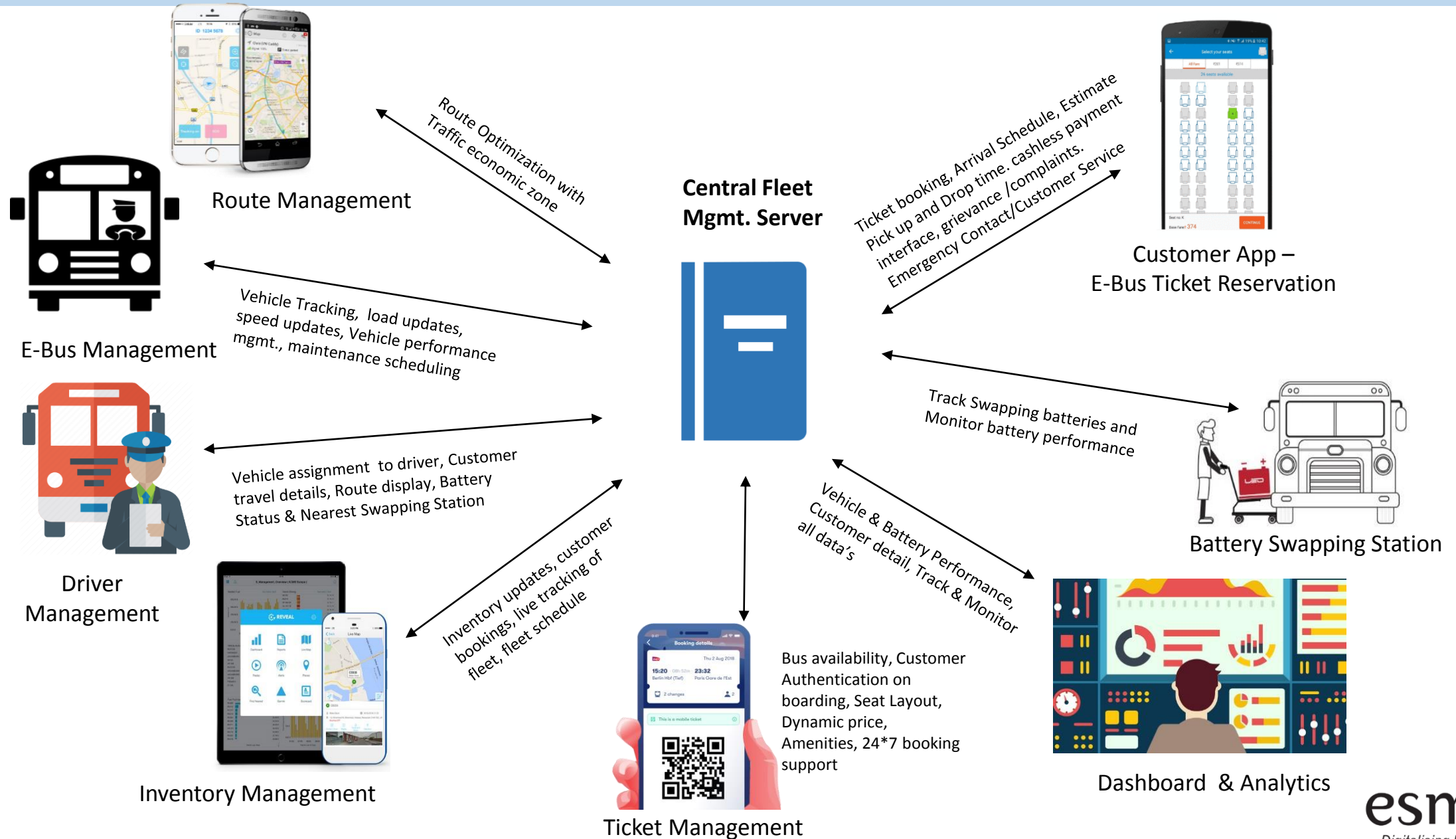
Prabhjot Kaur, PhD
Co-Founder and CEO

esmito
Digitalising EV Eco System

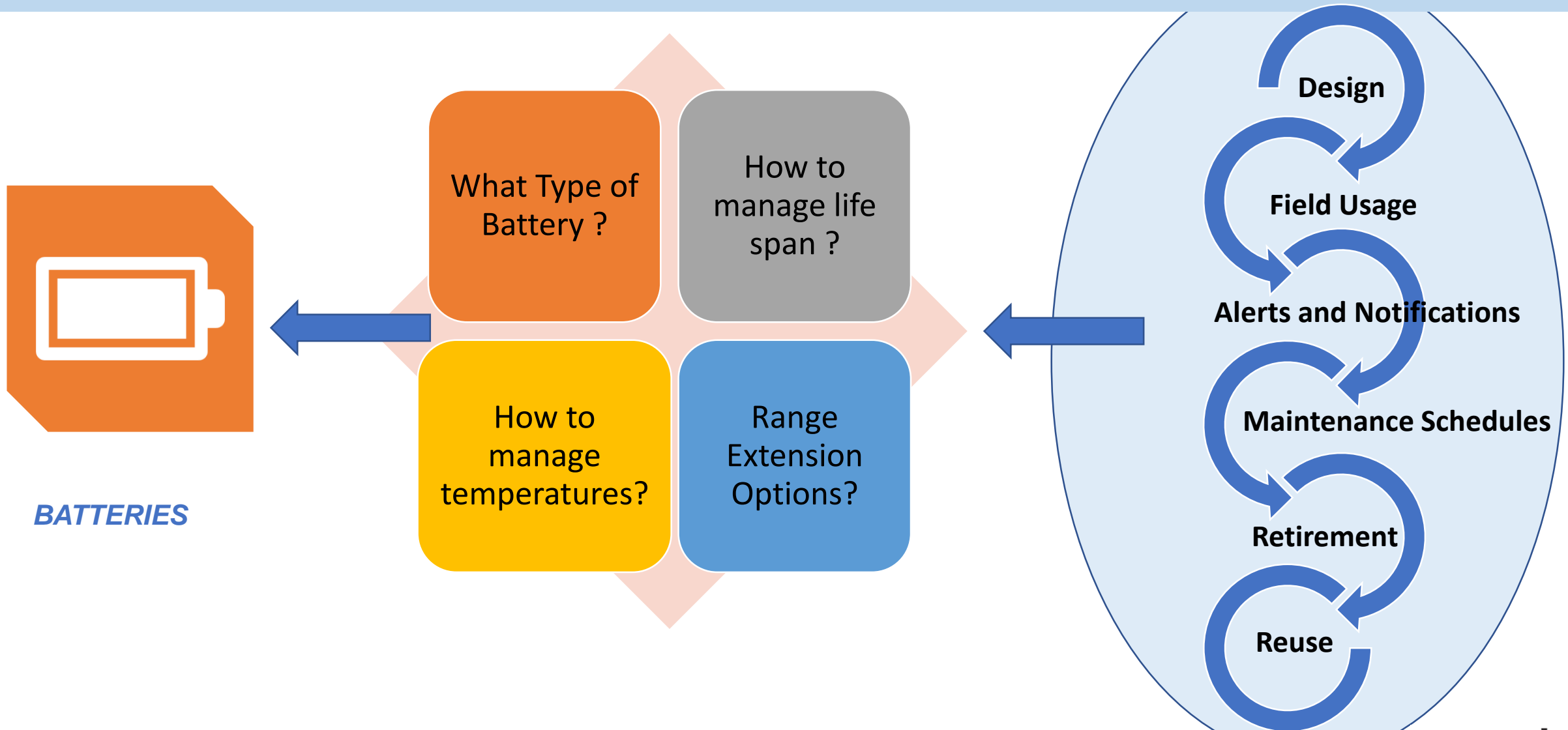
Technology for e-Bus Fleet for STU



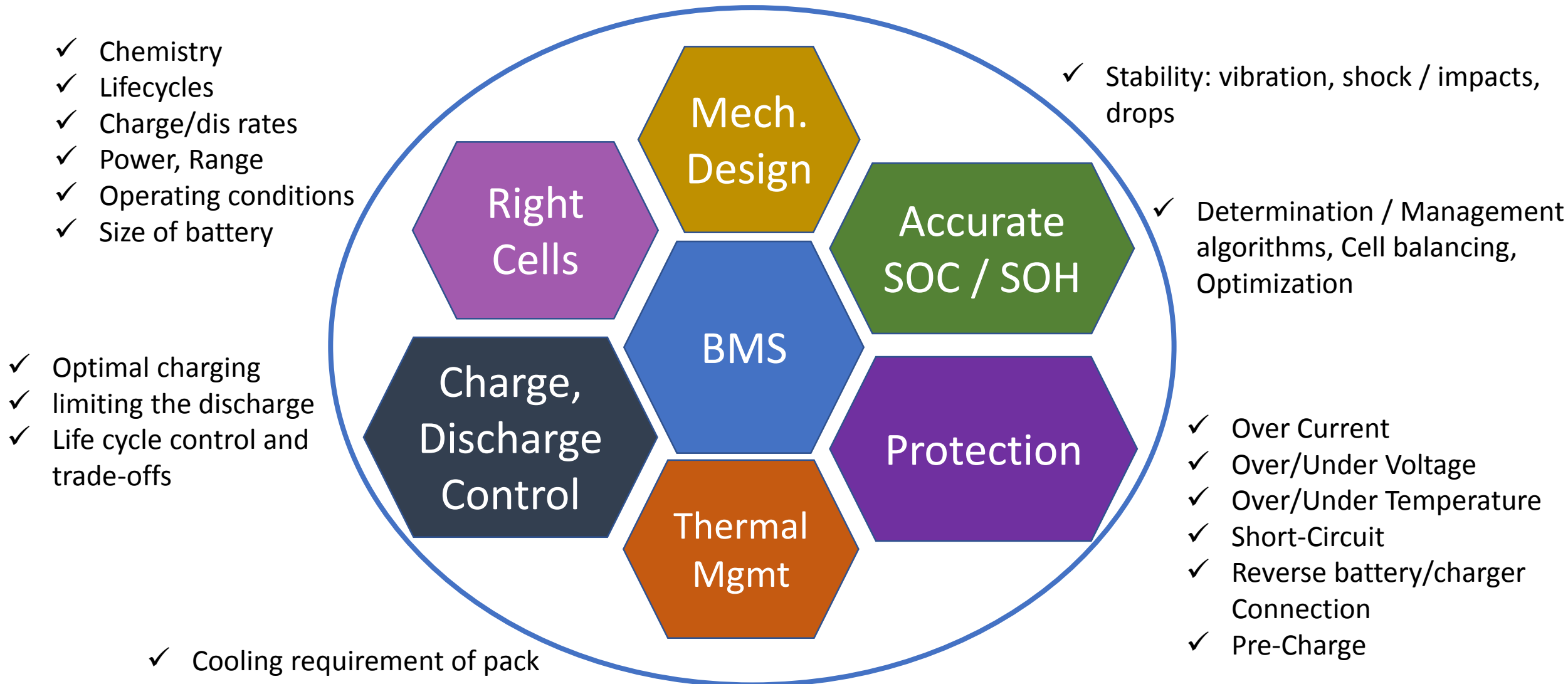
e-Fleet Management Platform for STUs



The Bigger Threat



Battery safety: Designing Stage



Battery Safety: While in Operations



**UTILIZATION OF
ASSETS**



**VEHICLE
PERFORMANCE**



**BATTERIES
PERFORMANCE
AND SAFETY
ALERTS**



**DRIVING
BEHAVIOR AND
PATTERN**



DRIVER EFFICIENCY



**ALERTS ON
FAULTS/ERRORS IN
ASSETS**

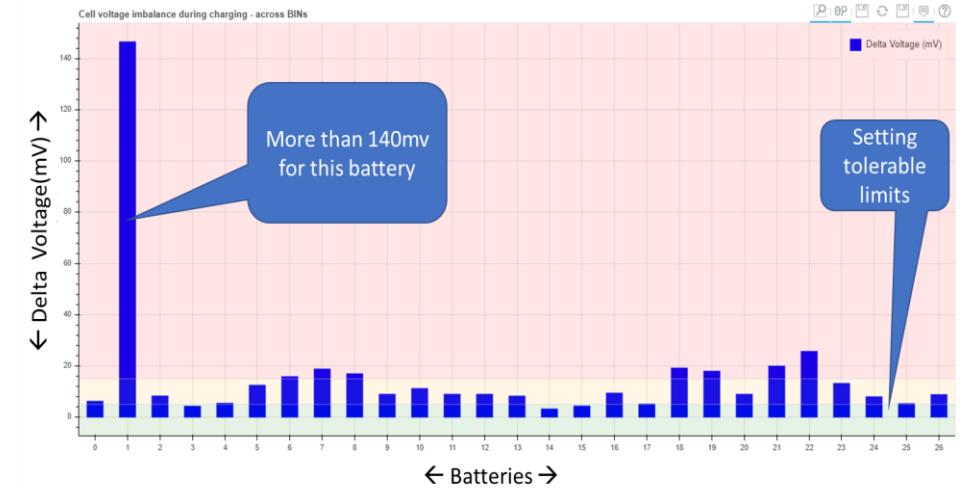


**FLEET UTILIZATION
ANALYSIS**



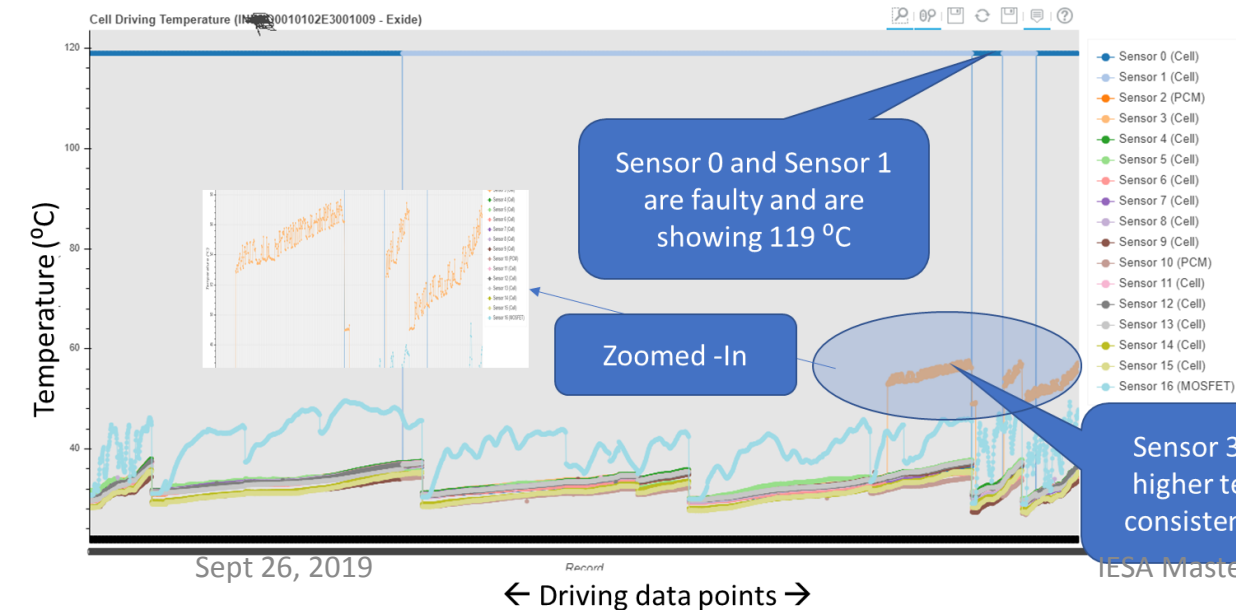
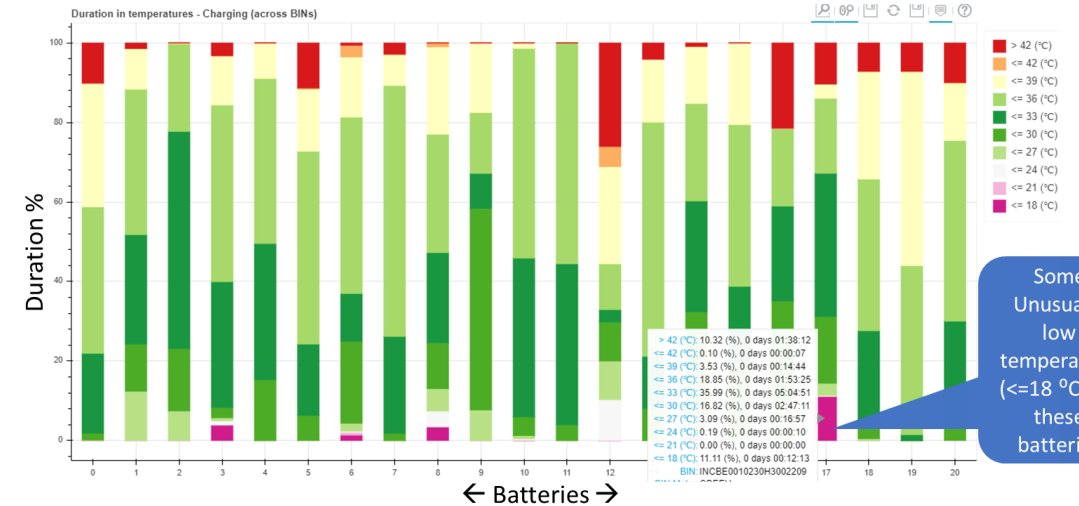
**CUSTOMER
FEEDBACK
ANALYSIS**

Sample Analytics: Battery



Cell Voltage Imbalance during Charging

Time Spent by batteries in different temperatures during charging



FAULT RECOGNITION

Categories Subsystems

- Predict and Prevent Threats and accidents
- Compare Assets and bring out the best selection
- Aid in Planning and Re-planning of Infra / Network
- Recognise and layout training plans at all levels through data analytics



esmito

Digitalising EV Eco System

Please contact
prabhjot@tenet.res.in