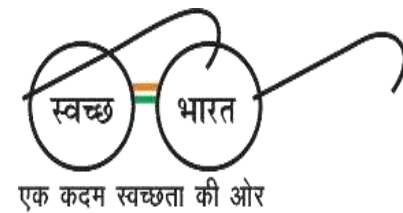




75
आज़ादी का
अमृत महोत्सव



सत्यमेव जयते
GOVERNMENT OF INDIA
MINISTRY OF HOUSING AND URBAN AFFAIRS



CRUT PAVING WAY FOR SOCIALLY INCLUSIVE & GENDER SENSITIVE MOBILITY ECOSYSTEM IN THE CAPITAL REGION OF ODISHA



GOVERNMENT OF ODISHA
HOUSING AND URBAN DEVELOPMENT DEPARTMENT

Presenter: Ms Dipti Mahapatro
General Manager (P & A), CRUT

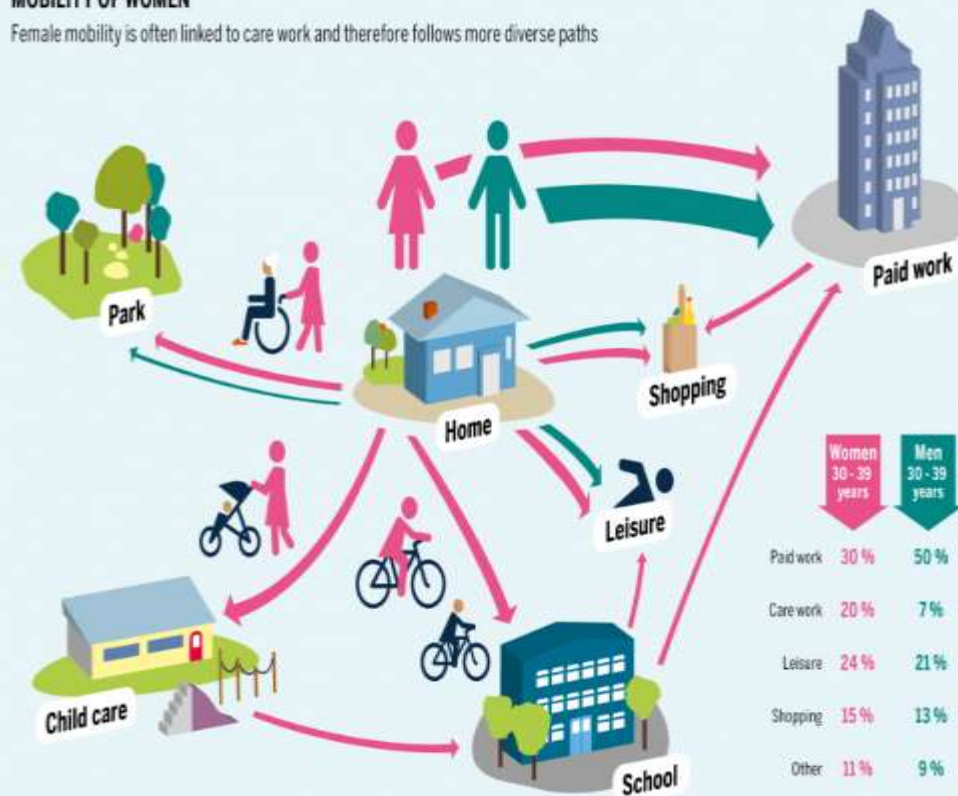
Gender & public space



Mobility & women's access to opportunities

MOBILITY OF WOMEN

Female mobility is often linked to care work and therefore follows more diverse paths



Differences in **mobility patterns** of men and women

Men and women choose **different modes** of transport even when commuting for the same purpose

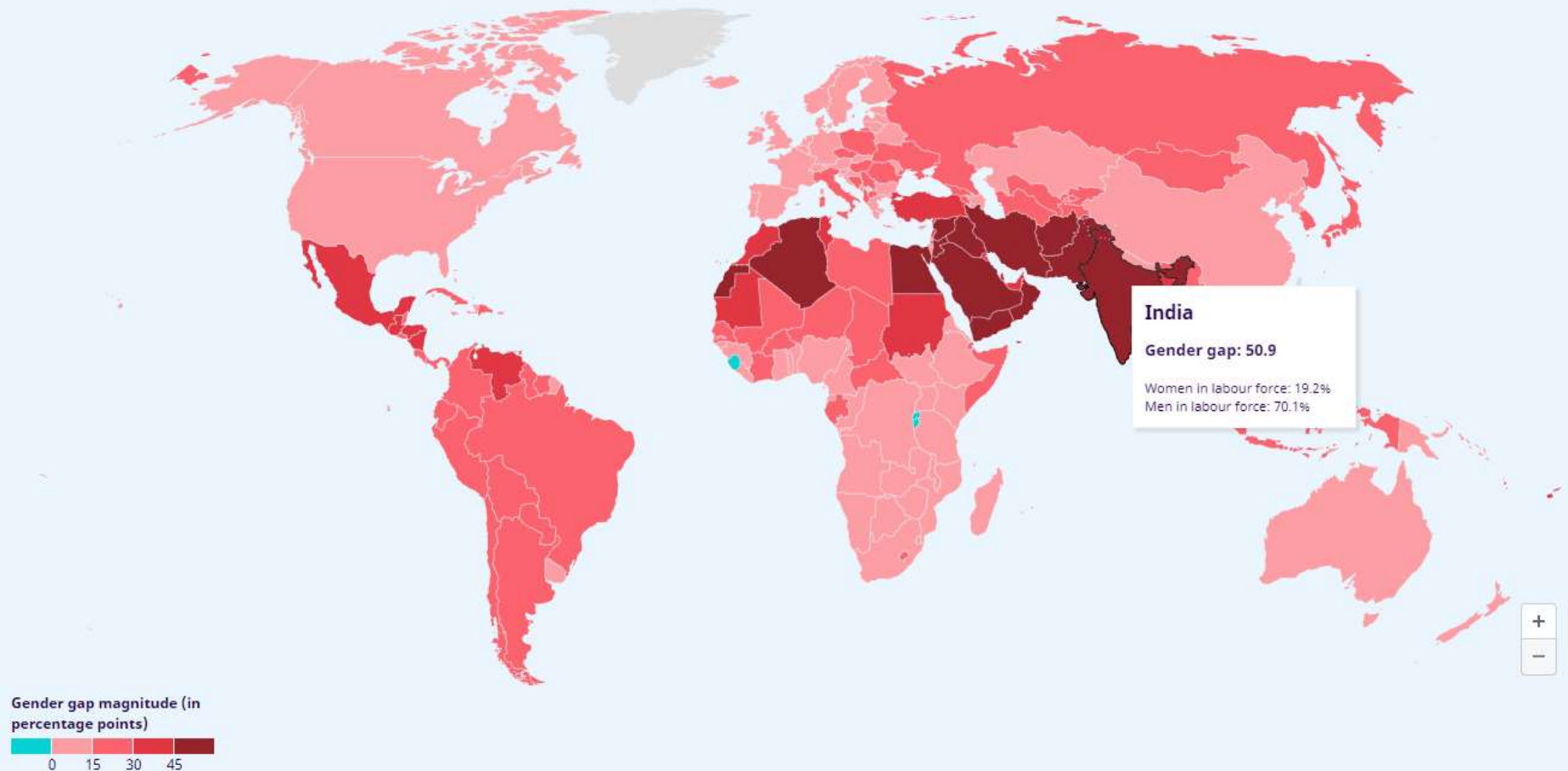
Distance travelled for the commute

Hour of the day travelled

Source: Diehl & Cerny, 2021

Gender gap in Labour Force Participation Rates across the world

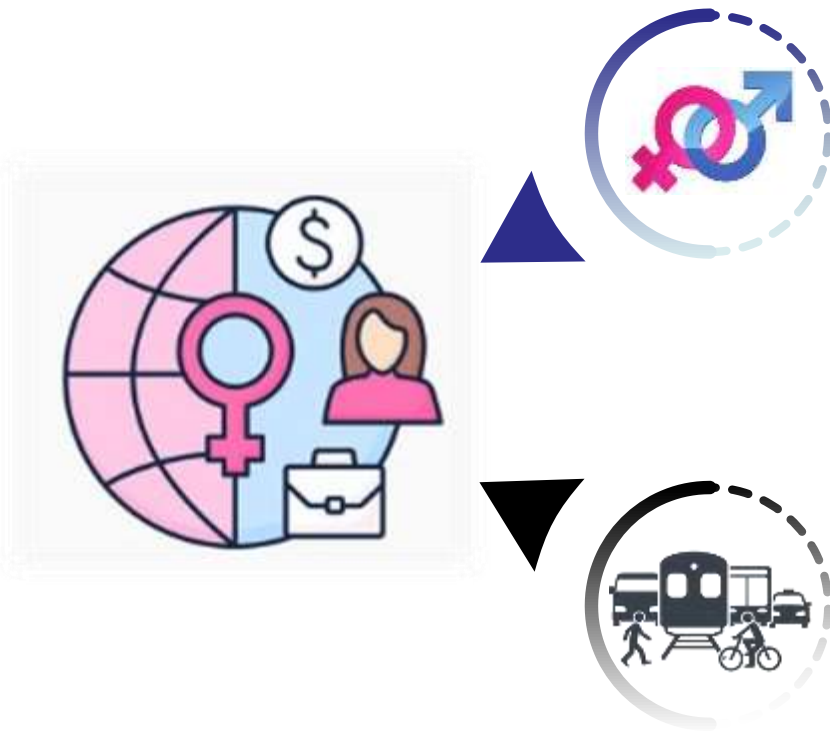
► Differences between male and female labour force participation rates



Labour force refers to the sum of all persons of working age who are employed and those who are unemployed. The labour force participation rate expresses the labour force as a percentage of the working-age population.

Source: International Labour Organisation, 2022

Female Labour Force Participation Rate in India



Amongst the lowest FLFPR globally at 22.8% in 2019-20, with the urban FLFPR (18.5%) being lower than rural FLRPR (24.7%)

Source: The World Bank, 2021

Specifically in the transport sector, only 1% women possess commercial driving license

Source: MoRTH, 2018

Case Study: Socially Inclusive & Gender Sensitive mobility services of CRUT, Bhubaneswar





Transit services of CRUT



Standard & midi non AC Mo Bus



Standard AC Mo Bus



Mo E-Ride



E-Bus (also known as Mo Bus)



EVs of CRUT



First & last mile connectivity by feeder service of Mo E-Ride to Mo Bus

Socially Inclusive & Gender Sensitive initiatives for the crew



50% reservation for women “Guides” (conductors of Mo Bus)



100% reservation for women, transgender & HIV+ people as “Sarathis” (drivers of Mo E-Ride)



Policy on recruiting women Captains (drivers of Mo Bus)



Training of crew



Provision for separate washrooms for different gender groups in the Depots



Capacity building programme for crew during the lockdown

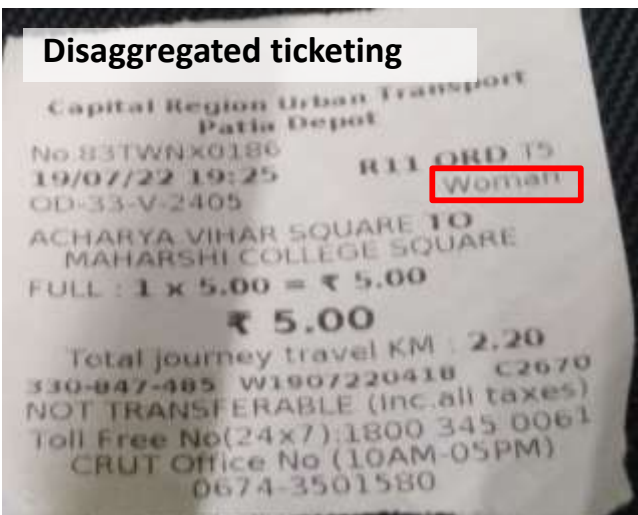
Socially Inclusive & Gender Sensitive initiatives for the public



Concession for differently abled people & their companion on Mo Bus fare



Flat 50% concession on Mo Bus fare for senior citizens



Disaggregated ticketing



Well-lit Bus Queue Shelters



Provision for priority seats, CCTV surveillance & Emergency Panic Buttons in Mo Bus



Contribution to Sustainable Development Goals

Target 5.1

Gender
Inclusive
recruitment
policy

5 GENDER
EQUALITY



Target 8.5

Ensuring
equal pay for
equal work
to all

8 DECENT WORK AND
ECONOMIC GROWTH



Target 10.2

Mainstreaming
people
belonging to
marginalised
sections of the
society

10 REDUCED
INEQUALITIES



Target 11.2

Providing
safe,
affordable,
accessible &
sustainable
transport
system for all

11 SUSTAINABLE CITIES
AND COMMUNITIES



Target 13.2

Zero
emission Mo
E-Ride & E-
Bus promote
green &
resilient
mobility
services

13 CLIMATE
ACTION



Socially Inclusive & Gender Sensitive Mobility Ecosystem



Empower
Girls
for a brighter
Tomorrow

NATIONAL
GIRL CHILD DAY

Using official social media handles to spread awareness on gender sensitisation

----- Forwarded message -----

From: subhashree jena

Date: Fri, Jul 15, 2022 at 3:11 PM

Subject: Thank you for the services

To: <crutiber@gmail.com>

Sir/ Mam

I am writing to thank you for the quality of service provided by your organization. I have travelled by bus after long more than ten years maybe. This whole week i travelled to lot of places. I felt safe , comfortable and secure. Additionally, employing lady conductors made it more appreciative. Conductors and drivers were always courteous and professional. People with physical disability travel lot more comfortably than what i have seen with other cities. Congratulations on achieving UN service award, it was well deserved.

Hope this best service continues for you and ourselves. And reach a many no of places.

Thank you once again!!

Yours sincerely,
Subhashree

Commuter's feedback



Capital Region Urban Transport
(Bhubaneswar + Cuttack + Puri)



ride with pride

We Exude
Strength & Patience

Khusi Das

I have grown up hearing derogatory terms. I spent my entire school life hearing my classmates and teachers mocking me, telling me I'd amount to nothing in life. Those comments haunt me to this day. I was always interested in driving. I learned how to drive in just a day. That gave me a different sense of confidence. Thereafter, I decided to get my own car. This initiative seems perfect for me. I have that confidence to be on the road.

THANK YOU!



Capital Region
Urban Transport

