

How to boost urban or social projects through transport projects dynamics

At the neighborhood scale:

Example from Lisbon (Portugal),

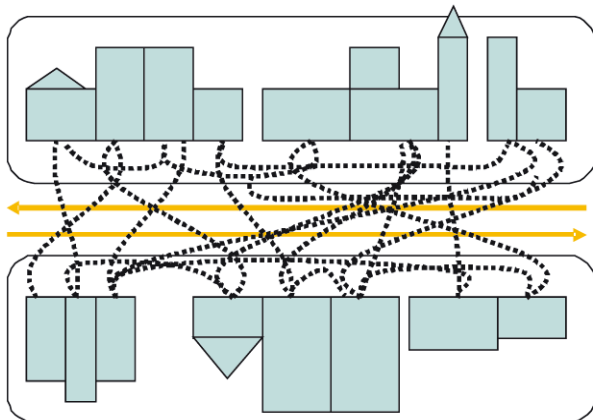
Lausanne(Switzerland) and other European places...

Julien ALLAIRE

Sociability of neighbors depends on traffic conditions

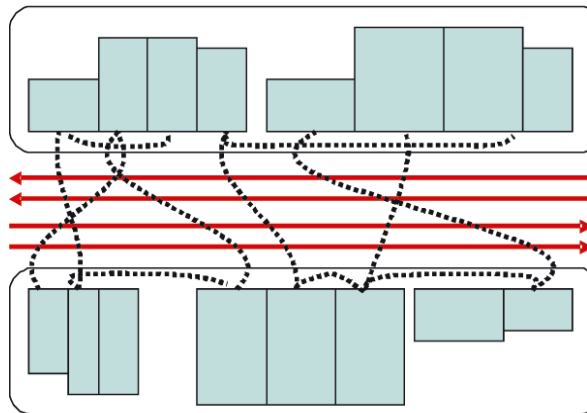


Low Traffic
2000 veh./day
200 veh./hour



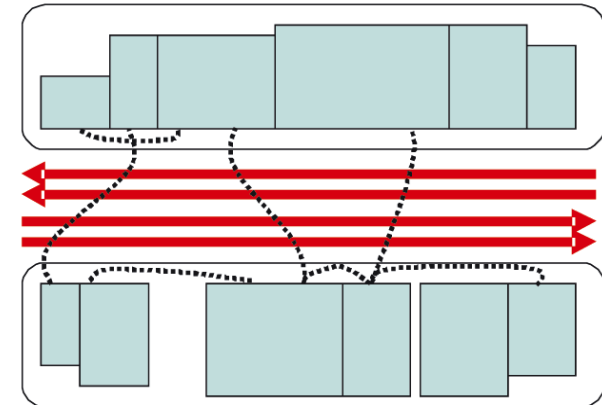
per personne
3 friends
6,3 acquaintances

Medium Traffic
8000 veh./day
550 veh./hour



per personne
1,3 friends
4,1 acquaintances

High Traffic
16000 véh./jour
1900 véh./heure



par personne
0,9 amis
3,1 acquaintances

Street Design For Pedestrians



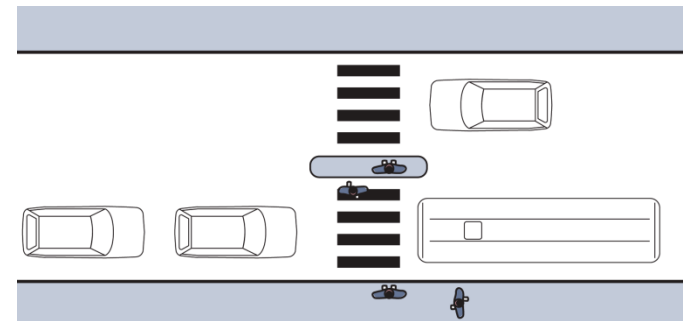
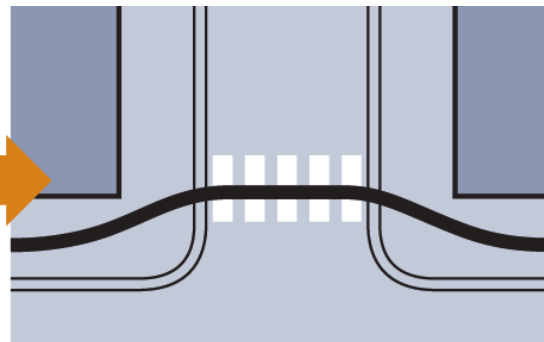
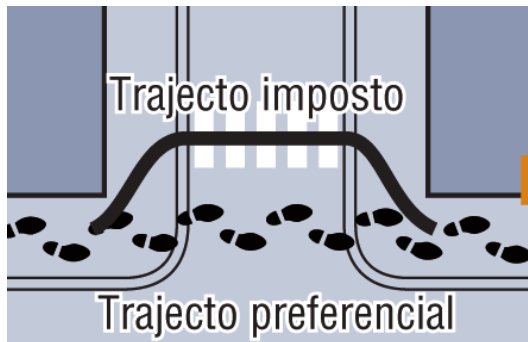
2m minimum



1,70 m minimum



1,80 m minimum



Traffic Calming Measures resulting from SUMP in Alameda



Pedestrian crossing in different kind of streets in a residential area

LAUSANNE (Switzerland)





GENEVA





traffic calming improve the quality of life in the neighborhoods

- Streets cannot be designed as Roads
- At a smaller scale, Measures are simple:
 - Reduce speed of vehicles
 - Create parking places
 - Increase the space dedicated to pedestrians and cyclists
 - Facilitate the moves of the non motorised trips
- It could be done with high investment (high quality pavement, etc.), but it could also be done
 - with very simple painting
 - With participation of the inhabitants
 - Directly by the citizens...
- It is at small scale but it could be promoted in CMP or SUMP through guidelines, etc.



Thank You!

Julien ALLAIRE



Director of International Operations

Julien.allaire@transitec.net