



# **FRENCH** COUNTRY SEMINAR

**Bienvenue !**

**Welcome !**





## **ABOUT EGIS:**

Corporate Overview and Smart Mobility Offering

■  
2022

# GLOBAL OVERVIEW

**70+** years

**ENR 21<sup>st</sup>**  
ENGINEERING NEWS  
RECORD GLOBAL RANKING

**1<sup>st</sup>**  
FRENCH ENGINEERING  
COMPANY

**8<sup>th</sup>**  
IN TRANSPORTATION  
MARKET

**€1.16 bn**



**62%**  
international

**79%**  
Consulting &  
engineering



**21%**  
Operation & mobility  
services

**2021**



**18,000**  
EMPLOYEES  
IN THE WORLD

## Operations



**4,500** roads in

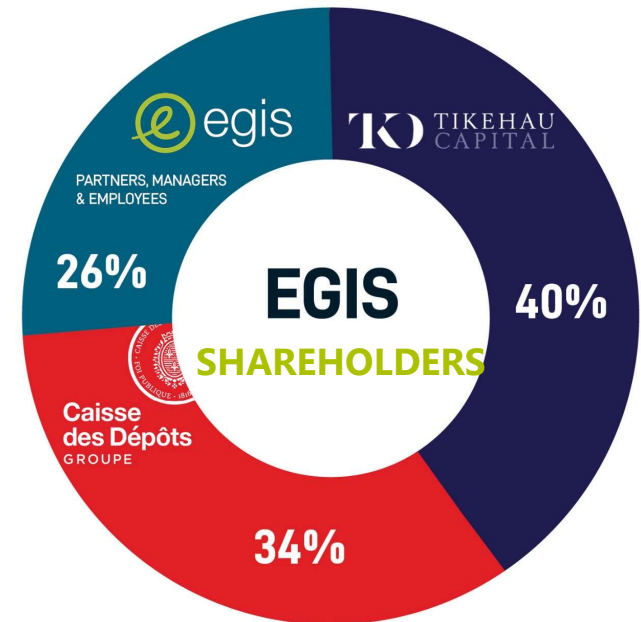


**20** countries



**17** airports worldwide

## OUR VALUES



# A LOCAL INTERNATIONAL PLAYER



# EGIS IN INDIA



**3000+**  
Employees in  
India



**500+**  
Completed  
projects in India

**~30 years**  
Of presence in the  
region

Egis in India has offices in all major locations in the Country and is responsible for Nepal, Bhutan and Bangladesh in addition to India.

# SERVICE OFFERING



RAIL



BUILDINGS



WATER



AVIATION



CITIES



ENERGY



MOBILITY



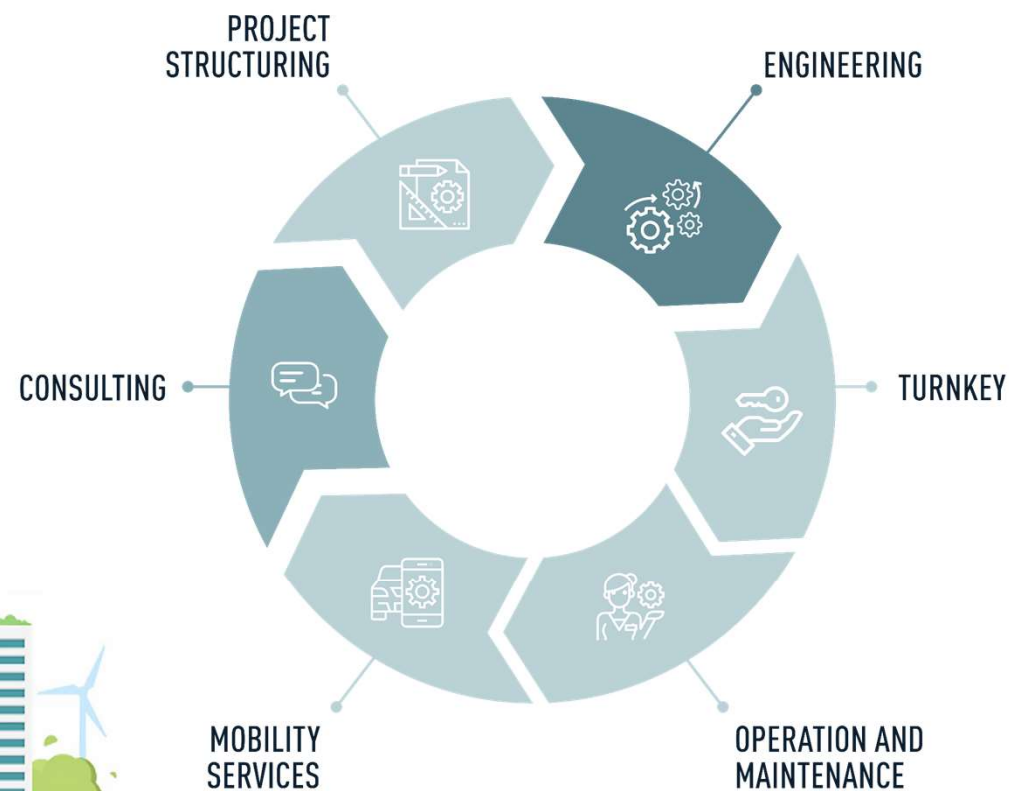
ROADS



PORTS, INLAND  
WATERWAY &  
MARITIME  
TRANSPORT



## ALONG THE ENTIRE **VALUE CHAIN** OF PROJECTS





# SMART MOBILITY: AN INTEGRATED OFFERING

Safer Roads

Smooth Traffic

Inclusive

Optimisation

Sustainable

Emission, Congestion



**Egis works on an integrated approach for planning, design and engineering of SMART & Sustainable mobility**



On-street parking management and traffic studies



Free-Flow tolling and tolling enforcement



Speed enforcement



Low Emission Zone and Clean Air Zone



Enforcement for urban cleanliness and safety



Car pooling lanes enforcement

# CLEAN AIR ZONES: IMPACT | BENEFIT

	London	Stockholm	Milan	Birmingham
<b>Traffic Volume<sup>1</sup></b>	30% ↓	22% ↓	12% ↓	
<b>Emissions</b>				
<b>CO<sub>2</sub><sup>1</sup></b>	19% ↓	14% ↓	15% ↓	
<b>PM<sub>10</sub></b>	20% <sup>2</sup> ↓ 27% PM <sub>2.5</sub> <sup>2</sup>	13% ↓	19% ↓	
<b>NOx</b>	25% <sup>2</sup> ↓	8,5% ↓	14% ↓	13% <sup>3</sup> ↓





# CASE STUDY: GREATER MANCHESTER CAZ

In 2021, Egis was engaged to set up and operate an end-to-end service for the Manchester Clean Air Zone

## WHY?

- Highest rate of hospital admissions for Asthma in the UK
- 1,200 early deaths annually in the region alone
- Air pollution cost England £5.3 billion in health and social cost by 2035
- Clean Air Plans to bring levels of harmful nitrogen dioxide (NO<sub>2</sub>) on local roads within legal limits

## HOW?

- Different charges for non-compliant vehicles (type/class)
- 7 days / 24 hours operation
- ALPR cameras for enforcement
- >1.5M vehicle journeys per day covered by the regulations





**Thank you!**

## **CONTACTS**

**Chief Commercial Officer (India)**

**[vasudha.sharma@egis-india.com](mailto:vasudha.sharma@egis-india.com)**

**Egis Tower, Plot No. 80, Sector – 32, Gurgaon,**

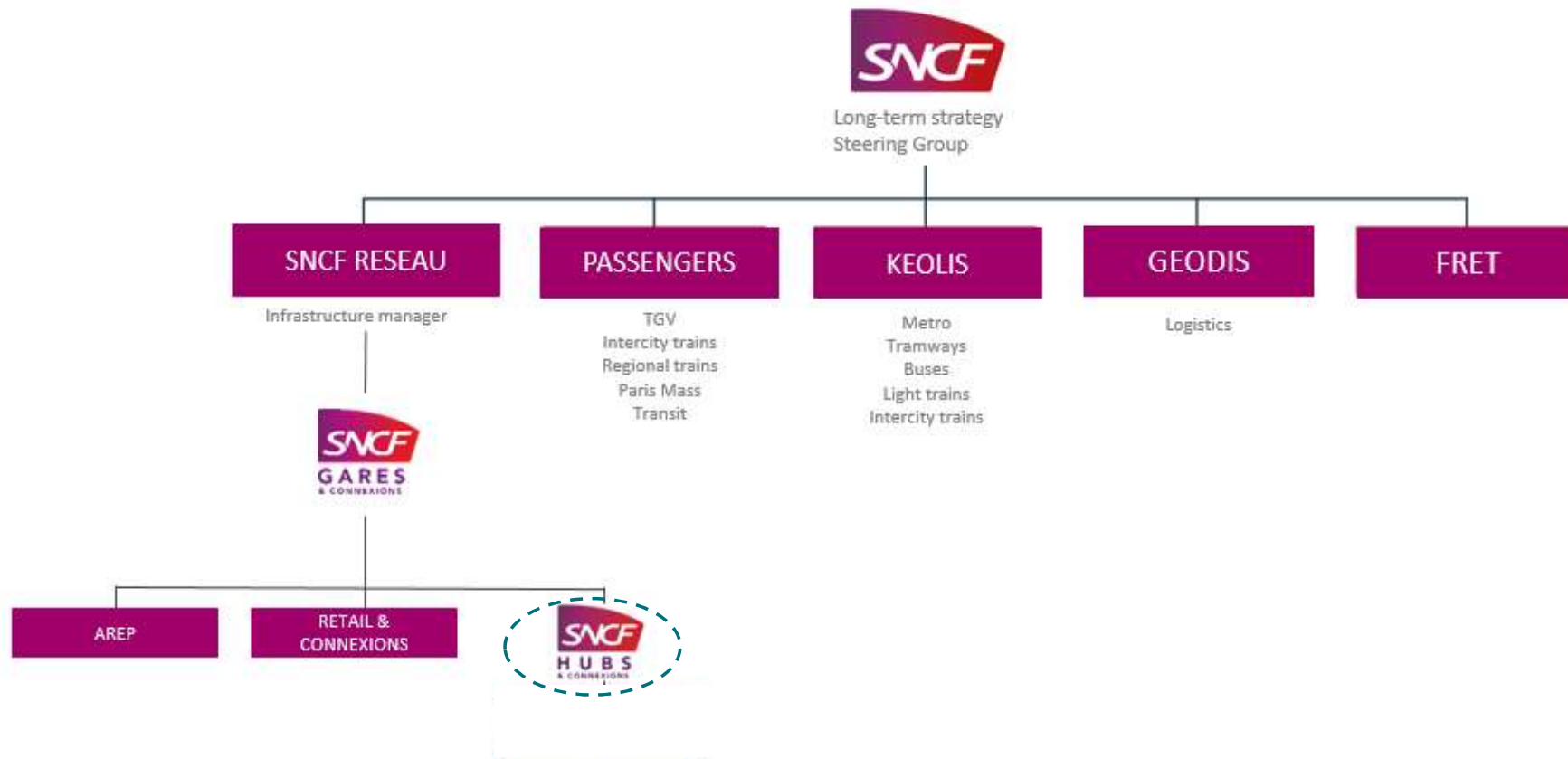
**Haryana – 122001 India**

**Tel : +91 1244249200**

**[www.egis-group.com](http://www.egis-group.com)**



# HUBS & CONNEXIONS



# HUBS & CONNEXIONS



INTERNATIONAL SUBSIDIARY  
OF SNCF GARES & CONNEXIONS



**A BRANCH IN INDIA FOR DIGITAL AND BIM  
SERVICES SINCE JUNE 2022**

**ENHANCE THE DEVELOPMENT OF HUBS & CONNEXIONS  
INTERNATIONALLY**

**INTERNALIZE AND DEVELOP BIM EXPERTISE WITHIN AND  
FOR THE RAILWAYS SECTOR**

**STRENGTHEN COOPERATION BETWEEN RAILWAYS ACTORS**

**ENSURE THE PRODUCTION OF QUALITY MODELS AT A  
COMPETITIVE COST**



# Hubs & Connexions

Management of stations and transport hubs outside France, providing the skills and expertise needed to make stations successful.

Strong expertise in management, operations, maintenance, development, and the monetization of in-station spaces.

Operating primarily in Europe, India and Monaco.



# SNCF HUBS & CONNEXIONS

## MASTERS THE 3 KEYS TO INTEGRATED STATION MANAGEMENT



### DESIGNS

- Project management
- Financial engineering
- Urban planning
- Architecture
- Building Information Modeling (BIM)
- Design – signage, furniture
- Transport mobility

### DEVELOPS

- Retail development
- Retail strategy
- Flow analysis
- Feasibility studies
- Financial engineering
- Market analysis

### OPERATES

- Facility management optimization
- Retail management
- Station management
- Maintenance operations
- Challenging prices

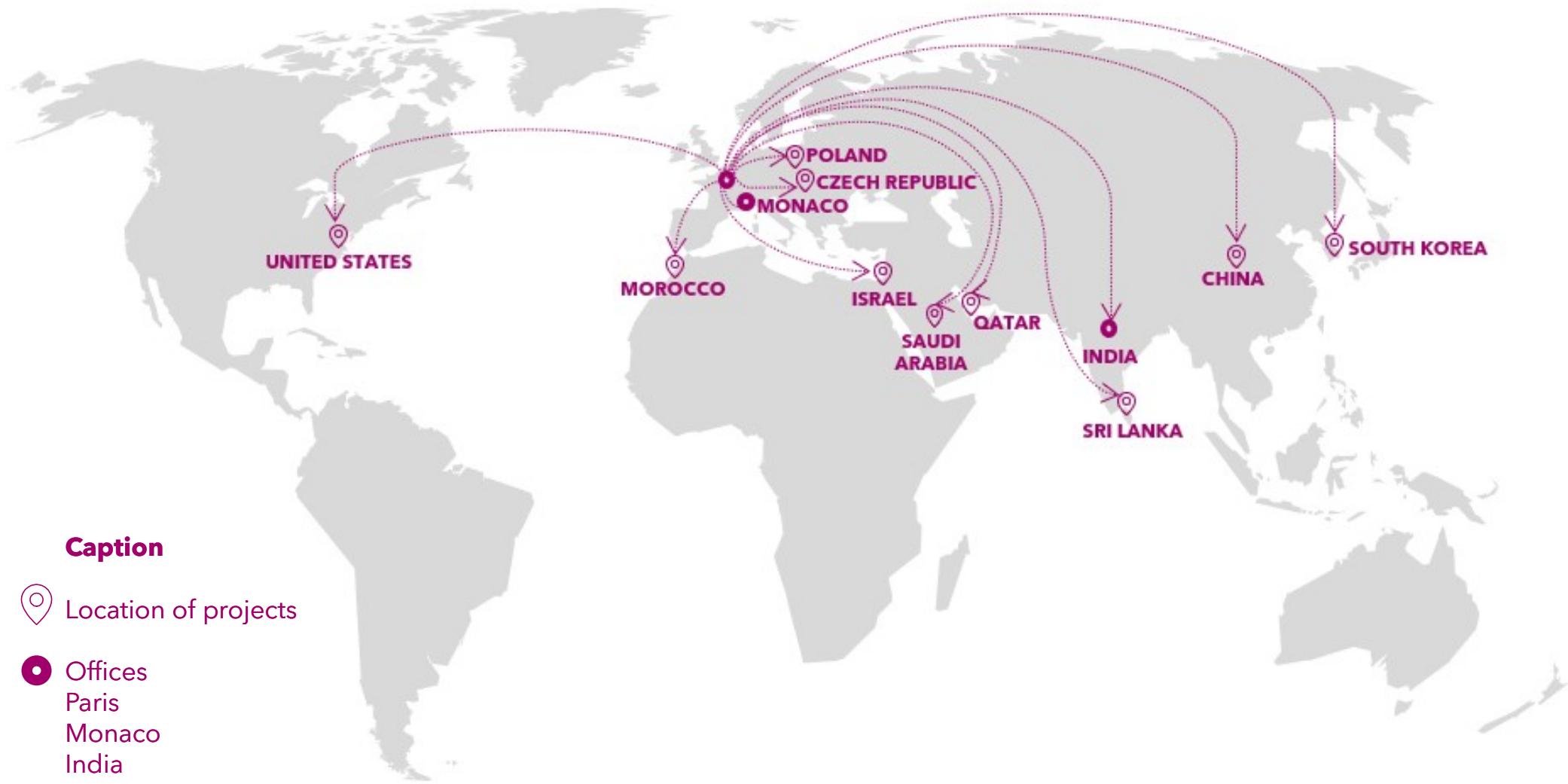


An architectural rendering of a transit-oriented development (TOD) at a historic train station. The scene features a large, ornate building with a clock tower and arched windows. In the foreground, a modern glass and steel transit hub is integrated into the historic architecture. A busy pedestrian plaza is filled with people walking, and a tram is visible on a track to the right. The text "Transit Oriented Development (TOD) approach and intermodality as key drivers of our know-how" is overlaid on the image.

# Transit Oriented Development (TOD) approach and intermodality as key drivers of our know-how



MAP OF INTERVENTIONS



Caption

- Location of projects
- Offices
  - Paris
  - Monaco
  - India

# HUBS & CONNEXIONS DIGITAL & BIM DEPARTMENT

## A MANAGEMENT TEAM AT H&C FRANCE HEADQUARTERS

### Experts in BIM service management

Quality control

Coordination with the ecosystem of actors

Identification of customer needs and formalization of an adapted response



SNCF's CSR approach

Internalize BIM competencies



Railway expertise

Enhancing the value of heritage data

## A PRODUCTION UNIT IN THE H&C BRANCH IN INDIA

### BIM technical experts trained around our SNCF Gares & Connexions business

Management and Production of BIM models

Development of innovative solutions

#### H&C DIGITAL & BIM DEPARTMENT



Fabrice MORENON  
Chief Operating Officer



Sébastien MARTIAL  
Head of BIM Operation

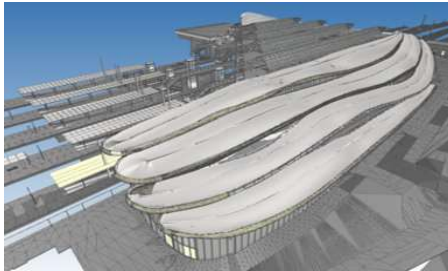


Juliette LEGROS  
Assistant Head of BIM Operation



# EXAMPLES OF ACHIEVEMENTS

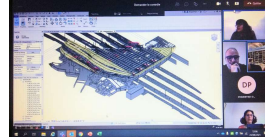
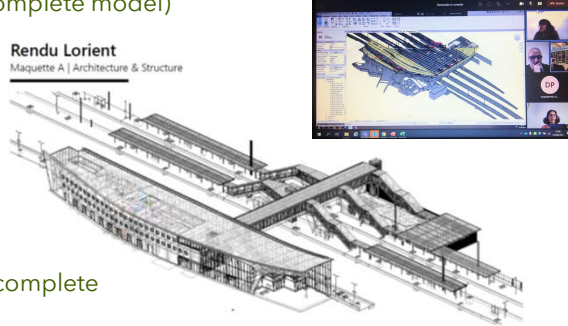
## ✓ RENNES TOD STATION (complete model) 31 000 m<sup>2</sup>



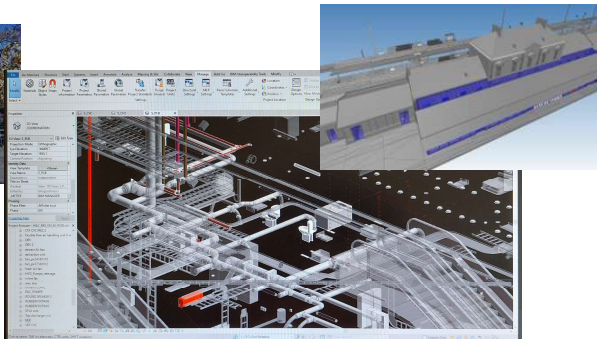
## ✓ LORIENT TOD STATION (complete model) 13 000 m<sup>2</sup>



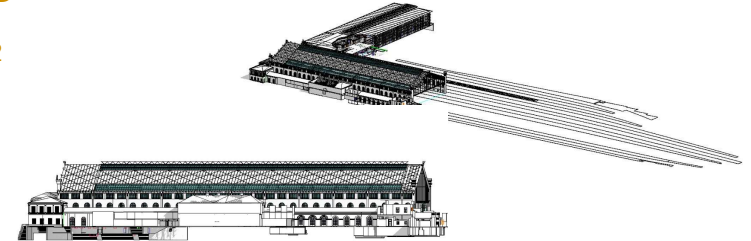
Rendu Lorient  
Maquette A | Architecture & Structure



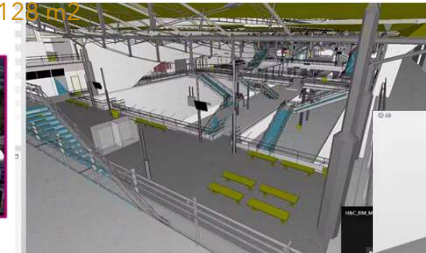
## ✓ VANNES TOD STATION (complete model) 7 600 m<sup>2</sup>



## ↻ MARSEILLE ST CHARLES TOD Station (complete model) 125 000 m<sup>2</sup>



## ↻ MARNE-LA-VALLEE TOD STATION (complete model) 19 128 m<sup>2</sup>



## ↻ MEUSE TGV TOD STATION (complete model) 3929 m<sup>2</sup>

## ↻ TOULOUSE TOD Station Redesign of model

## ↻ VILLENEUVE SAINT GEORGES Complete model

## ↻ SENS Complete model

## ↻ LISIEUX (complete model) 11868 m<sup>2</sup>

## ↻ ANNEMASSE Audit + redesign de maquette

## ↻ AURAY TOD station Audit + redesign de maquette

# THANK YOU FOR YOUR ATTENTION TIME FOR DISCUSSION

## Contact :

**Morgane CASTANIER**  
Morgane.castanier@sncf.fr

**Roxane LEFEUVRE**  
Roxane.lefeuvre@sncf.fr

**Fabrice MORENON**  
Fabrice.morenon@sncf.fr





**Guillaume BRUNIQUEL**

International Director

[g.bruniquel@sherpa-eng.com](mailto:g.bruniquel@sherpa-eng.com)



## MODEL & SIMULATE YOUR SYSTEM OVER ITS WHOLE LIFECYCLE

### Core Business Activities

Our core business is **modeling, simulation**, and **control system design**. In the past 25 years, this model-based expertise has been capitalized in a methodology and a set of tools which are the foundation of our products and services offer.

### Main applications :

- FuelCell system design
- EV/HEV Thermal system and energy management design
- Digital benchmarks (dynamic digital twins of existing BEV vehicles)

### Mobility References / Projects

**French OEMs** STELLANTIS and RENAULT/NISSAN, HYVIA, SYMBIO

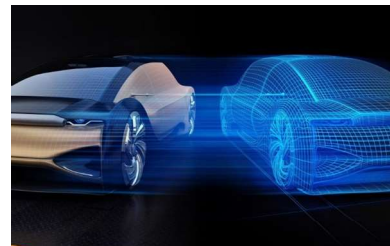
**Tier ones**: DENSO, FAURECIA, MARELLI



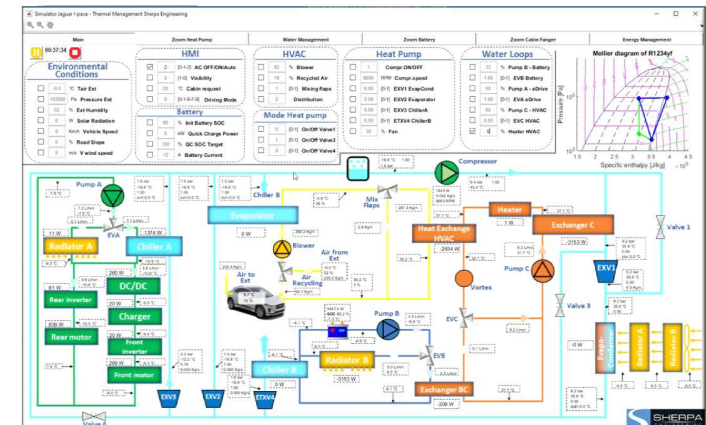
**Presence in India**

Partner : **SOLIZE Engineering**

Website: [www.solize.com/india](http://www.solize.com/india)



Vehicle Modeling  
Digital Twins



Vehicle digital bench



**Nitin Khandagale**

Director

P: +91 2067102102 M: +91 7755994213

[nitin.khandagale@sydac.com](mailto:nitin.khandagale@sydac.com)



## SIMULATION IN MOTION

### Core Business Activities

Driving **Simulators** and **Engineering Services**

### Mobility References / Projects

#### India:

- Indian Railways, Karnataka State Road Transport Corporation, Alstom, BEML

#### Abroad:

- SNCF, Transport London, Airbus, BHP, Kiwi Rail, RATP

### Clients in India

- Indian Railways, Karnataka State Road Transport Corporation, Alstom, BEML

### Presence in India

**50+ employees**

Sydac Simulation Technologies India Pvt. Ltd. Pesh Infotech, 1st Floor, Hinjewadi,  
Phase 1, Pune 411057, Maharashtra  
Website: [www.oktalsydac.com](http://www.oktalsydac.com)





**Hari Somalraju**  
Managing Director  
[hksomalraju@systra.com](mailto:hksomalraju@systra.com)

# SYSTRA

## CONFIDENCE MOVES THE WORLD

### Core Business Activities

SYSTRA is a consulting and engineering firm, a **world leader in public transport infrastructure engineering**. Its areas of expertise are applied to different fields of mass mobility: high-speed rail, conventional rail, metro, light rail transit. SYSTRA group in India provides **planning, design, project management and supervision services**. We are a multidisciplinary team of project managers, architects, engineers, and experts delivering engineering services to public and private organizations.

### Clients in India



### Presence in India

**2,300+ staff**

Head office in Faridabad, and 5 regional offices in Ahmedabad, Mumbai, Bangalore, Chennai and Kolkata. More than 20+ project offices across India.

Website: <https://www.systra.in/en/>

### Mobility References / Projects

#### - India:

- Climate Change Mitigation Strategy for Urban Transport in India, AFD funded
- City Bus Route Rationalization plan for Kochi, AFD funded
- General Engineering Consultant for Ahmedabad metro phase I and Surat metro
- General Consultant for Mumbai metro line 5, 9, 10 & 12 (Civil works) and Line 5,6, 7A & 9 (Systems)
- Detailed Project Report for Ropeway Connectivity to Killar through Saach Pass in District Chamba
- Detailed Design consultancy services for Mumbai Coastal Road Project - Package 2

#### - Abroad:

- High Speed Line South Europe Atlantic
- Honam Line - High Speed Rail
- Tangier - Kenitra High Speed Rail line
- London Crossrail
- Grand Paris Express: lines 15, 16 and 17
- Riyadh metro line 1, 2 & 3





**Benjamin FAUCHIER DELAVIGNE**

Public affairs director &  
Head of sales Asia POMA INDIA  
[benjamin.fauchier-delavigne@poma.net](mailto:benjamin.fauchier-delavigne@poma.net)

**Shariq KHAN**

Regional Sales Manager POMA INDIA  
P: +91-7060111994  
[shariq.khan@poma.net](mailto:shariq.khan@poma.net)



## A CONNECTION WE SHARE

**Core Business Activities****World leader in ropeway transportation system**

- From design, manufacturing, installation and maintenance

**Mobility References / Projects**

**India:** Gulmarg, Manali-Solang, Auli, Patnitop, Bhaleydhunga...

**Abroad:** New-York (USA), Toulouse (France), Medellin (Colombia), Taipei (Taiwan)...

**Clients in India**

- Jammu & Kashmir Cable Car Corporation, Srinagar
- Empyrean by Skyview, Patnitop
- Ski Himalayas, Manali
- Garhwal Mandal Vikas Nigam, Uttarakhand
- Sikkim Tourism Department, Sikkim



Website: [www.poma.net](http://www.poma.net)

**Thameem Kamaldeen**

Managing Director - Signalling, Alstom India  
[thameem.kamaldeen@alstomgroup.com](mailto:thameem.kamaldeen@alstomgroup.com)



## MOBILITY BY NATURE

**Core Business Activities**

**Engineering & Manufacturing** of Sustainable Mobility Solutions

**Mobility References / Projects****India:**

- **Mainline** : 12000 HP e-Locos for Indian Railways
- **Urban Metro** : Delhi, Lucknow, Kochi, Chennai, Mumbai Line 3, Agra-Kanpur, Bhopal-Indore, Delhi-Meerut RRTS

**Abroad:**

- Queensland Metro, Sydney Metro - Northwest & Southwest, Montreal Metro

**Clients in India**

- India Railways, MMRC, DMRC, CMRL, LMRC, NCRTC, BMRCL, MPMRCL, KMRL

**Presence in India**

**Employees: 10,000+**

Offices: 25+ sites (6 industrial sites, 4 major engineering centers and 2 e-LoCo maintenance sheds)

Website: [www.alstom.com/alstom-india](http://www.alstom.com/alstom-india)

# Round Table 1 : Sustainable infrastructure development & planning intermodality for Urban transport



**Fabrice Morenon**

Managing Director



**Morgane Castanier**

Director  
Clients, Marketing,  
Technologies



**Vasudha Sharma**

Chief  
Commercial  
Officer India



**Nitin John  
Khandagale**

Director

**MODERATED BY**



**Jyoti Vijayan Nair**  
Portfolio Manager



**Hari Somalraju**

Managing  
Director



**Anurag Somvanshi**

Head of  
Business  
Development



**Thameem Kamaldeen**

Managing  
Director - Signalling  
India Cluster



## Round Table 2 : **Innovative Mobility Solutions for Last Mile Connectivity**



**Benjamin Fauchier Delavigne**  
*Sales Director, Asia*



**Guillaume Bruniquel**  
*International Director*



**MODERATED BY**



**Sumit Gupta**  
*Trade Advisor*





# **FRENCH** COUNTRY SEMINAR

**Merci !**

**Thank you !**

**Reach us** [inde@businessfrance.fr](mailto:inde@businessfrance.fr)

