



# **Experience / Learnings from The participation under The Leader's Programme in Urban Transport Planning (LUTP)**

**Mr. Harsahadray J. Solanki  
Director,  
Solid Waste Management Departement  
Ahmedabad Municipal Corporation**

## Participation in Urban Transport Planning (LUTP)

As a General Manager BRTS-Ahmedabad got a chance to participate in Urban Transport Planning (LUTP) course under the leaders' programme as part of the "Capacity Building Programme" organised by Ministry of Urban Development(MOUD) in the year 2012.

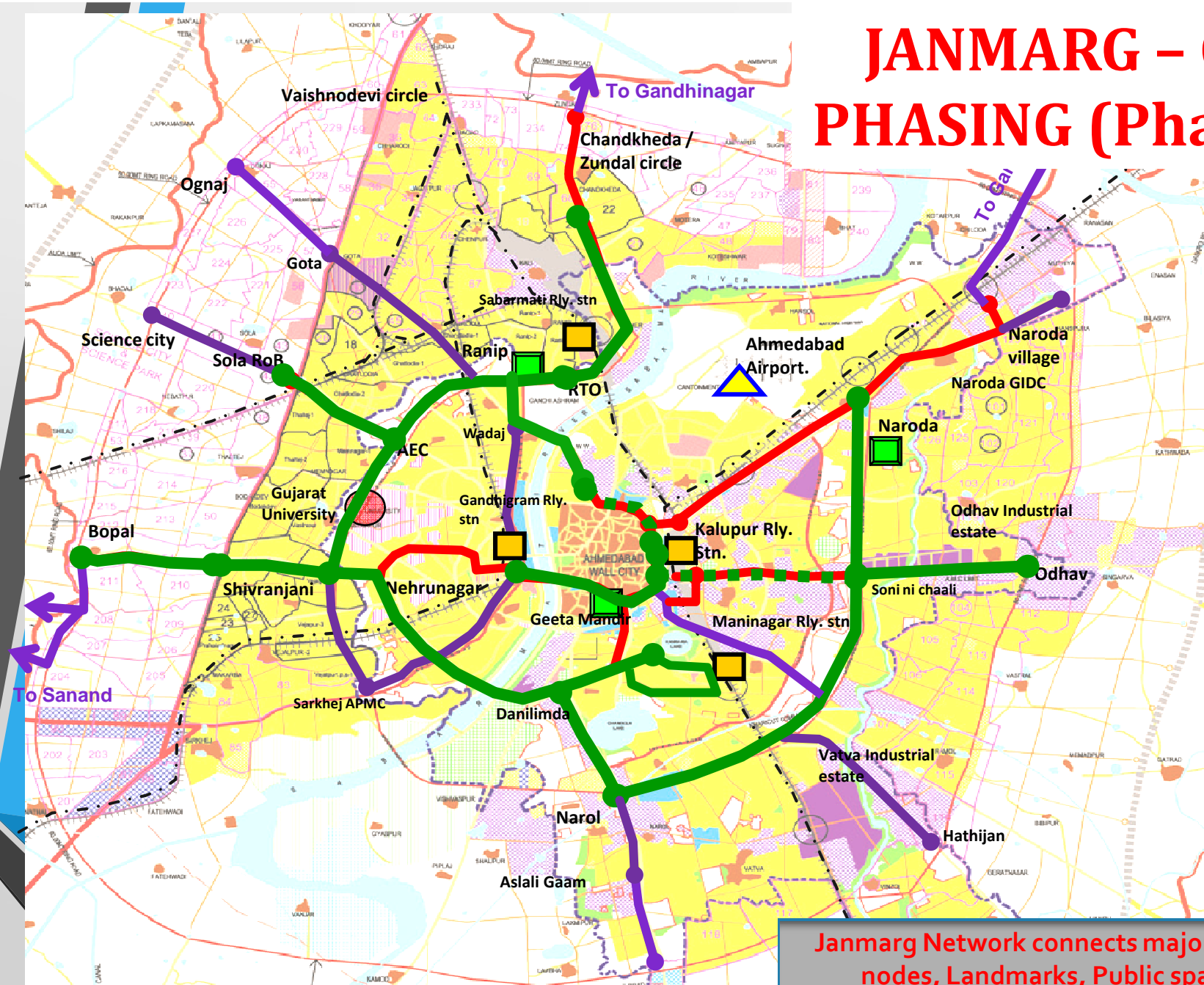
### Learnings

- **Acquired enhanced knowledge base and skills.**
- **Systematic and inclusive learning.**
- **Ability to analyze, research and articulate key issues.**
- **Knowledge to adapt and respond to emerging needs**
- **Understands the issues and benefits while implementing the project.**
- **Arrives at context sensitive solutions.**
- **Able to learn lessons from the best practices / projects of other cities.**
- **Ability to work in groups towards a focused objective.**

## Growth Opportunity after the Participation in LUTP

- Promoted as a General Manager – BRTS.
- Selected as Director(SWM) for Swachh Bharat Mission(SBM) work for Ahmedabad City.
- Also got a offer from Delhi Municipal Corporation as Deputy Commissioner for SBM work.
- Able to prepare DPR for Solid Waste Management work for SBM
- Able to set system of GPS / RFID based monitoring for iffective waste management
- Able to set dreams for : Scientific Closure of Pirana Dump Site  
: Segregation at source in the city  
(Swachhata Jan Model)

# JANMARG - CORRIDOR PHASING (Phase 1 + 2 + 3)



- █ Operational BRT(72 kms.) – 115 bus stops
- █ Phase 2 corridors – Under implementation (17 kms.)
- █ Phase 3 – (26.8 kms.)
- █ BRTS Potential corridors – Future network (68.75 kms.)

Janmarg Network connects major Origin-Destinations, Transit nodes, Landmarks, Public spaces, Activity generators, developing areas., low and middle income housing areas of Ahmedabad

## A Project of GPS & RFID based monitoring system in Waste Management

AMC has assigned work for 5 years to a reputed firm for providing GPS & RFID based monitoring system for effective supervision of more than 900 vehicles deployed in solid waste management. This project has commenced from August-2014. This system is deployed in Door / Gate to dump collection vehicles, Container lifting vehicles, Road Sweeping machines etc.

**All are on PPP mode.**

## Main features of the scheme including modules

- Information of collection of solid waste of each route and vehicle with time
- Management of fleet of vehicles with time
- Increase in service ,accuracy and safety
- More effective system of collection of solid waste
- Satisfactory response to civic complaint
- Working of vehicles can be seen on map
- Integration of dump site ,weigh-bridge
- More effective of assessment of working of contractor
- Trustworthiness of payment of contractor
- Ahmedabad City will be more neat & clean

## Status of the project

Deploying of RFID tags more than 1000 bins and 900 vehicles with Control Room set up is in operation since June-2014.

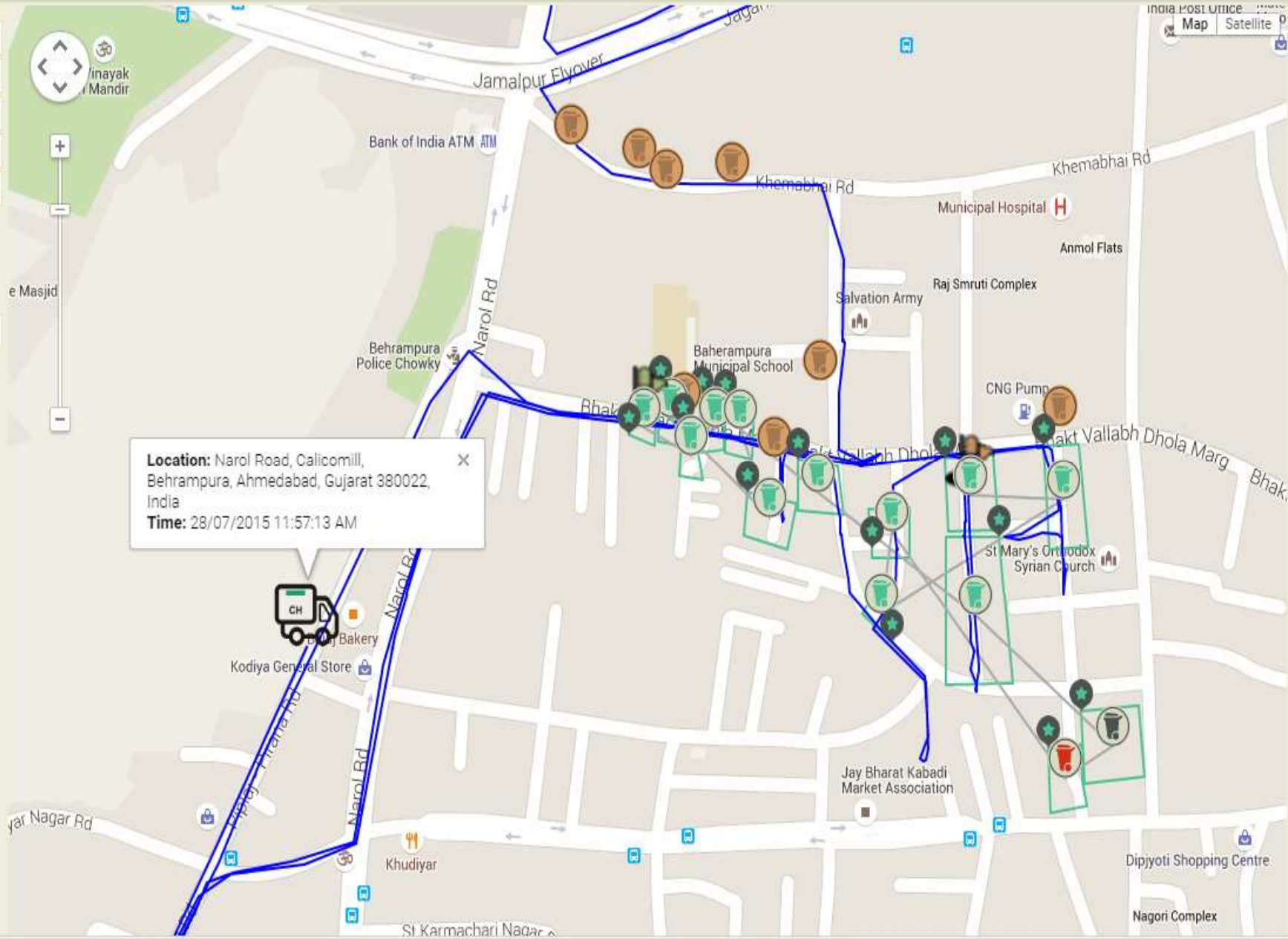
<b>No.</b>	<b>Type of Vehicles</b>	<b>Total installed GPS &amp; RFID</b>
1	Container Lifters	94
2	Door to Door Vehicles	626
3	Hook Lifters	65
4	Hiwa Trucks	11
5	Compactors	4
6	Refuse Compactors	30
7	Tipper Trucks	30
8	Self Riding Sweeping Machines	15
9	Tractor Mounted Sweeping Machines	7
10	Truck Mounted Sweeping Machines	17
11	Trash Skimmer	1
	<b>Total</b>	<b>900</b>

Zone: CENTRAL  
 Ward: Jamalpur  
 Transporter: Swachhata Corporatio  
 Vehicle Type: Chota Hathi  
 Vehicle: GJ-6-XX-6947  
 Date: 28/07/2015  
 From Time: 06:00  
 To Time: 20:00  
 Display Speed: Direct  
 Speed  
 Stoppage

Show Play

**Vehicle Summary**

Vehicle No: GJ-6-XX-6947  
 Vehicle Type: Chota Hathi  
 Route: Route-12  
 Job Start Time:  
 Job End Time:  
 Tot KM travelled: 23  
**Assigned Srvd POIs:** 12 / 14  
**Served By Others:** 1  
**Unass Srvd POIs:** 8  
**Unsrvd POIs:** 1 / 14





## **SBM Detail Project Report for ineffective waste management in Ahmedabad city**

### **OBJECTIVES OF THE PROJECT**

- To ensure that the city achieves 100 % open defecation free status.
- To provide adequate public and community toilet facilities.
- To reduce waste generation and waste reaching landfill site.
- All the waste (solid and liquid) generated is collected, treated, reused and disposed in a safe and scientific way.
- To increase the mechanized sweeping.
- To optimize the transportation costs.
- To improve the efficiency of the current system.
- To increase the awareness among the residents on hygiene concerns and health benefits.
- To generate revenue through recovery of waste.
- To close the potentially unhealthy landfill sites in scientific manner

## Dreams

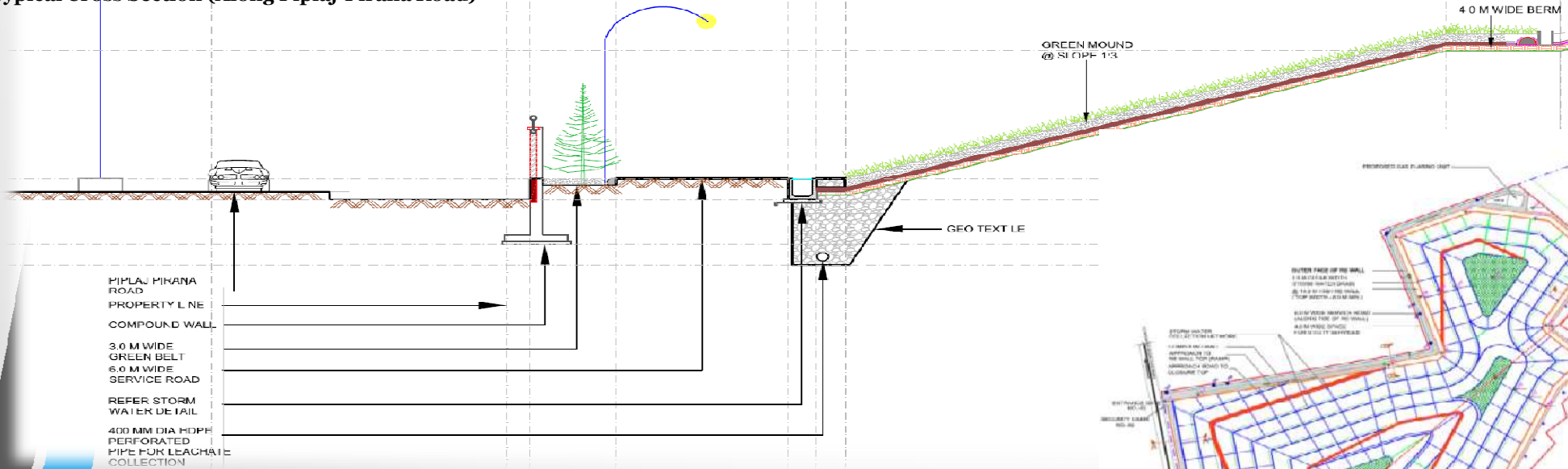
### Scientific Closure of Pirana Dump Site

- AMC has invited an offer / proposal from reputed & experienced consulting firms for Project Management Consultancy for Assessment, Evaluation, Management & Rejuvenation / Reclamation & Post Scientific Closure Management / Resource Extraction of existing Landfill site at Pirana
- Work for Project Management Consultancy for Scientific Closure of Pirana Dump site is awarded to IL&FS Environmental Infrastructure and Services Ltd. and for legal vetting for Scientific Closure of Pirana Dump site is awarded to Link Legal Advocates.
- The Project Management Consultant (IL&FS) has conducted required various environmental investigations and prepared all necessary reports for scientifically closure. AMC has finalized a design out of various options. DPR and Tender prepared by the Consultant will be finalized by sub-committee appointed by competent authority.

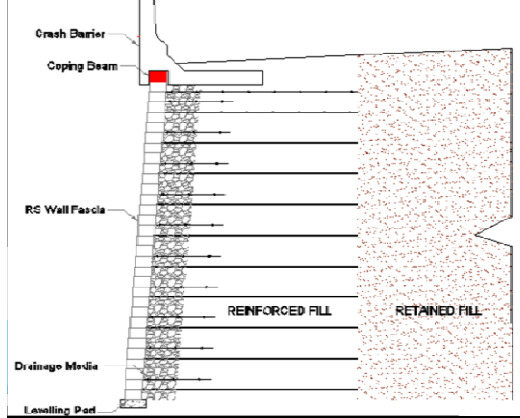
# Scientific Closure of Pirana Dump Site



Typical Cross Section (Along Piplaj-Pirana Road)



Reinforced Soil Wall – Typical Section (1.500 m long, 14 m high; and 8 m top width)

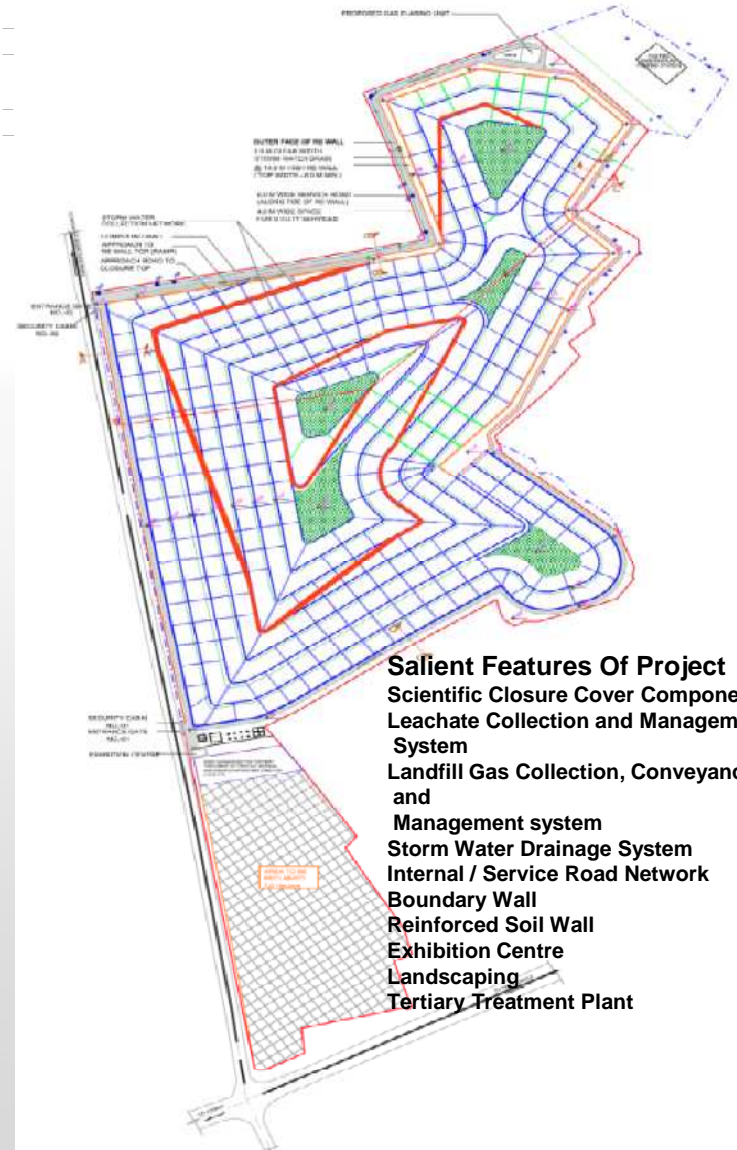
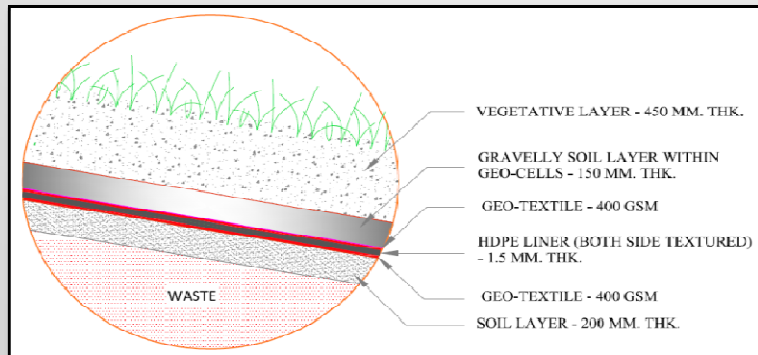


Reinforced Soil Wall will help in increasing the life of Pirana Dumpsite to accommodate additional waste of about 24 Lakh Tons (2.4 Million Tons)

MSW can be received till August 2017 :-

Total waste to be accommodated in footprint area )- 80.20 Lakh Cum @ 3200 TPD from September 2016 to August 2017

Scientific Closure Cover Component



- Salient Features Of Project**
- Scientific Closure Cover Component
  - Leachate Collection and Management System
  - Landfill Gas Collection, Conveyance and Management system
  - Storm Water Drainage System
  - Internal / Service Road Network
  - Boundary Wall
  - Reinforced Soil Wall
  - Exhibition Centre
  - Landscaping
  - Tertiary Treatment Plant

Current Dump area is approximately 42.50 Hectares.

Excavating and relocating relatively smaller waste mound to a confined footprint area (about 31.50 Hectare) to reclaim maximum area of the dumpsite. The project envisages reclamation of about 7 Hectare land

## Swachhata Jan Model

### Waste segregation at source and inclusion of waste pickers in main stream

- **AMC has started an initiative (November, 2014)** by approving private agencies to collect dry recyclables from commercial units in 2 zones out of 6 zones by engaging waste pickers.
- Observing success of this practice, AMC has planned and started Swachhata Jan Model (SJM) in 3 wards on 2nd October, 2015 and spread it in another 4 wards in February, 2016.
- Total 35000 residential units are planned to cover under SJM.
- All **units will be provided with 2 bins of 10 liters each, one green for wet waste and one blue for dry waste.**
- Separate vehicle / compartmentalized vehicle will be used for collection of segregated waste by deploying hydraulic vehicles. AMC will bear collection charges. Such vehicle will be equipped with GPS system.

- Dry waste will come at a sorting centre where AMC appointed agency will recover valuable dry waste and sale it to recyclers by engaging waste pickers.
- Such agency will retain 10% income over expenditure and remaining proceed will be distributed among waste pickers.
- Wet waste will be sent to a decentralized treatment plant for making manure.
- After the successful result in 3 wards, AMC initiated this project in more 5 wards of different zones. **SJM will be implemented in 1,00,000 residences** covering all 6 zones in phase manner.

